

New Jersey/Eastern Pennsylvania Therapeutic Recreation Association

NJ/EPA TRA NEWSLETTER

June/July 2011

Message from the President

Dear NJ/EPA TRA Members and Friends,
By the time this newsletter goes to “press”, TR Week (July 10-16, 2011), will have come and gone. As of today, over 60 tickets have been purchased for the Trenton Thunder minor league baseball game. That’s twice the number that we had last year. With that many TR enthusiasts present, perhaps we should warn the league – we’ll have



Inside this issue:

Board Updates	2-3
Committee Updates	4-9
Membership Update	10
Educational Opportunities	11-12
Scholarship Opportunities	13
ATRA Poster Conference	14

people organized and participating in outcome focused activities and still having a good time. LOL All joking aside, it’s a terrific event with a portion of the proceeds benefiting our 2011 Fall Conference scholarship fund. Thank you to everyone who helped to make it a reality, particularly those who advertised for the event, bought tickets, donated money, and attended the game. A special note of gratitude is reserved for Marlene Rivera, for her leadership in coordinating the event. Please take a few minutes to check out our website (www.njepa-tra.com), as it has become more accessible. We are in the final stages of adding the much requested PayPal link for online payment of memberships and registrations. We are also continuing to look at our by-laws, and hope to have something for you to review over the next month or two. As we chug through summer and the vacation months, we are getting closer each day to our fall conference, which is scheduled for November 14-15. Heather Burket is working her organizational wizardry and things are really coming together. Just a reminder that the best session ideas come from the membership, so please respond to the call

for papers. Each year we strive to improve the conference; we need your help and input to make that happen.

I’ll close this message with my reflection on TR week this year. I’m proud of my profession, our organization, and the opportunities that we have as recreational therapists. I hope that each of you had a great week. As always, please let one of the BOD know how we can serve you better. Take care and stay cool.

Sincerely,

Anne Richard, MS, LRT/CTRS

Board of Directors Update

Please welcome our new NJ Member at Large Aimee Montgomery Wilson!

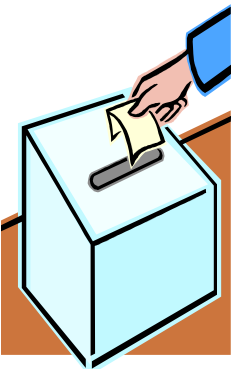


Aimee is a graduate of Kean University of New Jersey with continuing studies in Therapeutic Recreation at NYU. She is a Certified Therapeutic Recreation Specialist and an Activity Consultant, Certified. Since 1987 Aimee has worked most of her career in long term care with periods of work in adult day care for developmentally disabled adults and substance abuse. Since 1997 Aimee was trained as an instructor for the MEPAP course. She has been trained in ATRA's Dementia Practice Guidelines by the authors of the guidelines and by the NYC chapter Alzheimer's Association as a support group leader.

Aimee served as the coordinator of a Dementia unit that is granted through the NYS Department of Health for a two year cycle. She had been involved in a huge project working with the facility staff and 1199 Union to train the facility's staff in person centered care and meaningful activities as part of culture change.

Aimee is a currently a Business and Leadership Coach/Consultant in her company Ripple Coaching and Consulting, and the creative mind behind Ripple Designs.]]

Nominations for 2012 Board of Directors



Nominations for the 2012 Board of Directors: The 2011 Board of Directors and Nominations Committee is now accepting nominations for our 2012 Board of Directors Ballot. Open positions include PA Member at Large, Secretary, and President-Elect. If you are interested in nominating yourself or would like to nominate someone you know for a position on the 2012 Board of Directors, please e-mail Heather Burket at hkaten@gmail.com. All candidates will be considered and will be asked their intent to serve prior to being placed on the ballot. See next page (3) for description of open positions.

Open board positions for nomination

President-Elect

- Term: 3 years
President-Elect: Year 1:3; President: Year 2:3; Past President 3:3
- Assists the President and provides leadership in his/her absence.
- Serves as liaison to specific affiliate committees.
- Represents chapter at ATRA conferences and through involvement in ATRA Chapter Affiliate Council calls and meetings.

Secretary

- Term: 2 years
Changes occur on odd calendar years
- Maintains all official records of the affiliate.
- Records minutes for Board meetings and membership meetings; distributes minutes to the board.
- Does general correspondence for the affiliate as needed.
- Attends all scheduled board meetings and membership meetings.
- Contributes to discussions and deliberations on all affiliate business issues.
- Submits articles/information to the e-newsletters as assigned.

Pennsylvania Member at Large

- Term: 2 years
Changes occur on odd calendar years
 - Serves as liaison for members that live in Pennsylvania.
 - Monitors relevant legislative issues and participates in State Public Policy initiatives .
 - Represents Chapter through involvement in ATRA Membership calls.
 - Attends all scheduled board meetings and membership meetings..
 - Contributes to discussions and deliberations on all affiliate business issues.
 - Submits articles/information to the e-newsletters as assigned.
-

Education Committee Update

NJ/EPA Therapeutic Recreation Association's 14th Annual Fall Conference "PaRTnering in Progress"

Do you have knowledge to share? Consider earning CEUs while presenting at the 14th Annual NJ/EPA TRA Fall Conference, "PaRTnering in Progress" held on **Monday and Tuesday, November 14 & 15, 2011!** We are looking for presenters (both old and new) on a variety of topics. Presenters or co-presenters from complimentary and collaborative disciplines are welcome.

Not sure what to present on? Consider the following suggestions:

- ◆ How do we pool our knowledge and share our professional resources on a local and national level? (professional associations, within local TR programs, with Legislators)
- ◆ What are the tools of our trade which continue to push our progress into the future (APIE, Standards of Practice, documentation)?
- ◆ How do we collaborate with clients, peers, and supervisors, and other disciplines?
- ◆ How are we working with and within the community?

Think creatively...these suggestions are only the beginning. Put your own spin on our theme: "PaRTnering in Progress".

Contact Heather Burket at hkaten@gmail.com or Susanne Lesnik-Emas at slesnik@temple.edu with questions or to discuss a presentation idea. If you are interested in presenting please submit the proposal information requested **in the following call for papers (pg 5)** to Dr. Susanne Lesnik-

Conference Planning Volunteers

We are looking for some willing members who would be interested in getting involved in small but significant way, for our Fall conference this September and October, by offering their assistance as needed. Tasks might include creating a flyer, stuffing packets, making name badges, etc... If you have some free time and are interested in learning more information about available ways to getting involved in our Fall Conference planning, please contact Heather Burket at hkaten@gmail.com.

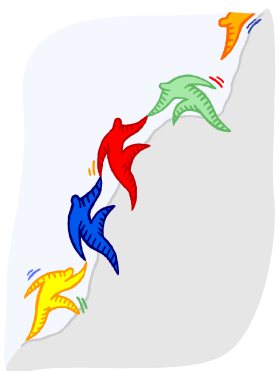
Internship Directory

If you are interested in posting an internship at your facility to the NJ/EPA Internship Database please email Cynthia Franklin at cidfish529@yahoo.com

Conference Volunteers Needed!

NJ/EPA TRA is seeking volunteers for our 14th Annual Conference, “PaRTnering in Progress”, on November 14th and 15th in Princeton, New Jersey. Being a volunteer at the Annual Conference is a wonderful opportunity to network with professionals and become involved and familiar with the NJ/EPA TRA.

- Volunteering for BOTH Monday and Tuesday gives you a discount of \$20.00 off the Full Conference registration fee. If you are only able to volunteer one day (Monday OR Tuesday), you will receive a discount of \$10.00 off the daily conference registration fee.
- As part of our commitment to Therapeutic Recreation students, we offer opportunities for volunteer positions to be filled by students first. We understand that some universities require professional volunteer hours and many look to complete those hours at the conference. In order to provide a discount in recognition of our volunteers’ time, we limit our number of volunteers to **12 volunteers per day**. No “walk in” volunteers will be accepted. Professional volunteer applications will be accepted prior to the application deadline but will not be considered until after our application submission deadline has passed and all student volunteers have been selected.
- You must be a member of NJ/EPA TRA in order to be a volunteer for the conference. If you are not currently a NJ/EPA TRA Member, please fill out membership application found at our website at <http://www.njepa-tra.com/membership.htm>.
 - Please visit our website at <http://www.njepa-tra.com/continuingeducation.htm> to download a volunteer application.



Interested? Have any questions? Please contact Amber Hauer at 267-221-9800 and/or adhauer@gmail.com.

Call for Papers for the 14th Annual NJ/EPA TRA Fall Conference

“PaRTnering in Progress”

Do you have knowledge to share? Consider earning CEUs while presenting at the 14th Annual NJ/EPA TRA Fall Conference, “PaRTnering in Progress” held Monday and Tuesday, November 14 & 15, 2011 at the New Jersey Hospital Association Conference Center in Princeton, NJ! We are looking for presenters (both old and new) on a variety of topics. Presenters or co-presenters from complimentary and collaborative disciplines are welcome.

Contact Heather Burket at hkaten@gmail.com or Susanne Lesnik-Emas at slesnik@temple.edu with questions or to discuss a presentation idea.

PROPOSAL MUST INCLUDE:

1. Title of session (please limit to 10 words)
2. Speaker’s name, address, daytime telephone number, fax and email
3. Brief description of the program (limited to 30 words)
4. Learning outcomes: outcomes must be measurable and indicate what the audience will learn by participating in the session (limit 3)
5. Outline of session
6. Mode of presentation: Lecture, discussion, panel, interactive activities
7. Resource list: books, articles, web sites
8. NCTRC Job Analysis code
 - a. Foundational Knowledge (FKW)
 - b. Practice of Therapeutic Recreation/Recreation (PTR)
 - c. Organization of Therapeutic Recreation/Recreation Therapy Service (ORG)
 - d. Advancement of the Profession (ADV)

Additional information can be found at <http://nctrc.org/standardsandpublications.htm>

9. Relevant audience (please be specific): entry level therapist, advanced therapist, student, educator, entry level supervisor, advanced supervisor, etc.
10. Identify AV equipment needed. We can provide: slide projector, TV/VCR, overhead projector, power point projection (speaker must provide own computer), and white dry mark board or flipchart.

IN ADDITION: Please include: ☼ Professional resume/vitae
☼ 100 word introductory bio

SEND PROPOSALS (Microsoft Word format appreciated) **to** Dr. Susanne Lesnik-Emas, CTRS at slesnik@temple.edu. **The deadline for call for papers has been extended to August 21st.**

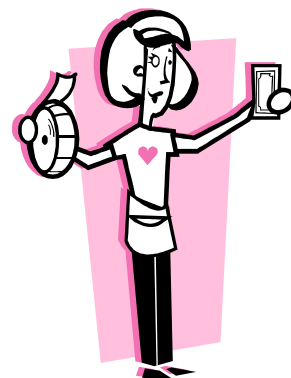
Fundraising Committee Update

Trenton Thunder Fundraiser

There were 60 tickets sold for the Trenton Thunder vs. Reading Phillies TR Week Networking Social. Over \$100 raised to support our Student and Professional Scholarship for our 2012 conference! Congratulations and thank you to all members who supported and attended this fun family friendly event!

Request for Silent Raffle Items

It's that time of year again! Time to start scouting for donations toward our highly anticipated Fall Silent Auction and Raffle. In years past, we have received items such as TR and collegiate spirit-wear, themed gift baskets, restaurant gift certificates, gift cards, theatre and sporting event tickets, and home décor. Do you have any friends or family that own or manage a restaurant or retail store? Do you have any new gift-type items lying around the house that you will never use? We also need baskets, basket fillers, clear basket wraps, ribbons, scotch tape, and brown lunch bags to put raffle tickets in. Please contact Marlene Rivera at marlene.ctrs@gmail.com if you have any questions related to accepted donations, to request a fundraising form letter to solicit donations from organizations you are affiliated with, or to arrange a pick-up date/time for items.



Communications Committee Update



Over the past month you may have noticed some changes to the website. We have been working on making the site more accessible. This has entailed making some minor changes to the layout such as widening the page, decreasing the amount of screens that open up, and changing rotating images to static images. Another minor change was deleting the "rollover" ability on the menu items. With these new updates we now have zero accessibility issues with the website! We invite you take a look a look at some of these new accessible features on the website.

Employment Opportunities

If you are interested in posting an employment opportunity on NJ/EPA TRA's website please contact Kaylee McGuire at kem3058@yahoo.com. Listings will be posted for 3 months and are free for members; a \$10 donation is suggested for non-members.

Networking, Advocacy, & Outreach Committee Update

The NAO Committee has been busy organizing events and networking opportunities for NJ/EPA TRA members and friends. I would personally like to thank Marlene Rivera for organizing a fantastic baseball fundraising social which was held on July 17th. Over 60 tickets were sold and everyone enjoyed watching the Trenton Thunder take on the Reading Phillies. It was a home-run event!

I am also excited to announce our next event, the NJ/EPA TR Association Fundraising Happy Hour. This fundraising social will take place at the Public House Philadelphia, located at 1801 Arch Street, in Philadelphia, PA on Friday, August 26, 2011, from 7:00 P.M.- 9:00 P.M. There is a \$5.00 donation at the door and drink specials including \$3.00 Coors Light and Yuengling Drafts, \$4.00 select wines and \$5.00 well drinks. This is a great opportunity to socialize, network, meet new people, and have a great time. All NJ/EPA TRA members and friends are invited. For more information, please contact Karin Tsantilis, CTRS at karinctr@gmail.com.

Lastly, I would like to invite you to join NJ/EPA TRA on Facebook! Yes, that's right, we are now on Facebook! This is a fantastic place to share resources, network, keep abreast of news, events, and educational opportunities. The page is new, so if you have information you think others would find helpful, please email Kim Grandal at kimgrandal@aol.com. Join us at <http://www.facebook.com/pages/New-JerseyEastern-Pennsylvania-Therapeutic-Recreation-Association/221140184577300>



The 2011 Board Liaison for the NAO committee is Kim Grandal CTRS, ACC/EDU.

The following individuals have graciously agreed to coordinating these fabulous networking opportunities:

TR Week Baseball Social: Marlene Rivera, CTRS (Trenton, NJ- Central)

Annual Conference Social: Jen Wheeler, CTRS (Princeton, NJ- Central)

Philadelphia Metro Social: Karin Tsantilis, CTRS (Philadelphia Metro)

Lehigh Valley Social: Evan Barker, CTRS (Lehigh area)

Discount on NJ Nets Tickets: David Boyle, CTRS (Northern NJ) Contact David directly if you would like to purchase discounted NJ Nets Tickets at 201-390-9321

If you'd like to get involved in helping to coordinate, advertise, or contribute to these socials or other events, please contact Kim Grandal at kimgrandal@aol.com.

Nominations Committee Update

Our Nominations Committee is seeking a member to serve on the committee in order to assist in recruitment and potential election of future board and committee members. We are especially interested in assistance from a member living in Northern/Central New Jersey.

Please contact Heather Burket at hkaten@gmail.com for more information.



Past Board of Directors Update

Our Past Board of Directors is in the final stages of reviewing some minor changes to the by-laws. They hope to have something for the membership to view over the next couple of months.

Membership Update

The total member count for NJ/EPA TRA at the end of July was 104!



Just a friendly reminder that if you have not renewed your New Jersey/Eastern Pennsylvania Therapeutic Recreation Association Membership now is the time to do so! You can print a membership application at: <http://www.njepa-tra.com/membership.htm>.

There are many benefits to being an active member of NJ/EPA TRA including email news blasts, reduced registration fees for conferences/workshops, resource information, and many more!

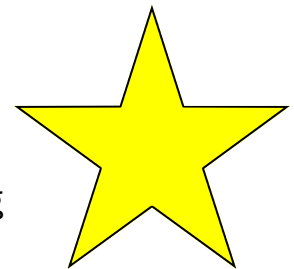
If you have any questions about membership or have had any changes such as an address, e-mail, or phone number change please contact Patrick Cahill at Cahill0829@aol.com so you can continue to receive all of your membership benefits.

NJ/EPA TRA would like to thank the following members for either joining NJ/EPA TRA or renewing their membership during June and July 2011 :

Thuy Nguyen and Alisha Rodier.

Congratulatory Messages

Are you celebrating an exciting milestone in your life that you would like to share with your colleagues? (i.e. engagement, marriage, new baby, graduation, new job, etc) NJ/EPA TRA would be glad to acknowledge your personal and professional achievements by posting a congratulatory message within our next E-newsletter. Please e-mail Kaylee McGuire at kem3058@yahoo.com.



Educational Opportunities

ATRA Annual Conference

Indianapolis, IN

September 18-21, 2011

<http://atra-online.com/displaycommon.cfm?an=5>

New Jersey/Eastern Pennsylvania Therapeutic Recreation Association

14th Annual Fall Conference "PaRTnering in Progress"

@ New Jersey Hospital Association Conference Center in Princeton, NJ

November 14-15, 2011

<http://www.njepa-tra.com/continuingeducation.htm>

17th Annual Downstate Conference

Wednesday, November 16, 2011

@Westchester County Center, White Plains, NY 10606

<http://www.nystra.org/conference.htm>

Metro Recreation-Continuing Education for Recreation Therapists & Activity Leaders

<http://www.metro-recreation.com/2010MetroWebsiteEd&TrRobinWexler2011flyer.pdf>

1. Seeing, Hearing, Smelling, Tasting and Touching the World: The Biology of the Senses Across the Life Span

How to develop and lead sensory activities in therapeutic recreation such as sensory integration, sensory stimulation.

August 11, 2011 @ Cedar Manor; Cedar Lane, Ossining NY 10562; Register by August 1st.

2. Horticulture Therapy in Therapeutic Recreation

Goal oriented techniques and leadership strategies for implementing hands on plant activities in your facility. Developing resources for horticulture supplies, skills and adaptive devices.

September 13, 2011; Register by September 3rd.

@ Nassau Extended Care Center; 1 Greenwich St. Hempstead NY 11550

3. Enhancing Creativity - How to think "outside the box"; September 19, 2011

Strategies to enhance creativity for the recreation therapist as well as the participants.

@ Sheepshead Nursing and Rehabilitation Center; 2840 Knapp Street, Brooklyn, NY 11235

4. Cooking Activities for Groups and Individuals in Therapeutic Recreation Activities

How and why to develop and lead cooking activities in therapeutic recreation.

Oct 16, 2011 @ Morris Hall; One Bishops' Drive Lawrenceville, NJ 08648; Register by Oct. 2nd.

Educational Opportunities Continued

Continuing Education opportunities through the National Council of Certified Dementia Practitioners

Variety of opportunities; details available through link below

<http://www.nccdp.org/nccdpnewsletter28.htm>

Program Planning for Therapeutic Recreation through ACES at the University of Florida

Online course for CEU's (Not available for college credit)

Robert M. Beland, PhD; rbeland@hhp.ufl.edu

<https://aces.dce.ufl.edu/Courses/Course.aspx?cld=101>

ATRA 2011 Teleconference Series

2011 calendar has been posted on the ATRA website

<http://atra-online.com/associations/10488/files/Webinars2011.pdf>

ATRA Annuals in Therapeutic Recreation

ATRA Annuals are collections of research articles and post-tests. These are available for CEU credit up to five years after publication. Members may view electronic versions as membership benefit.

<http://atra-online.com/displaycommon.cfm?an=5>

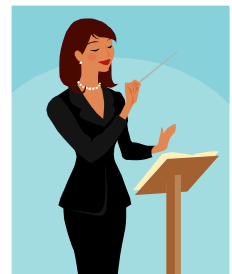
Check out the **New Jersey Hospital Association website** for a myriad of CEU offerings and Webinars available to you throughout the year as NJ/EPA TRA members.

<http://www.njha.com/education/conted.aspx>

Please visit our website at

<http://www.njepa-tra.com/continuingeducation.htm>

for other local CEU opportunities.



Would you like to advertise another educational opportunity that you know of on our website or within our E-newsletter? Please share your information with our Communication Committee Chairperson, Kaylee McGuire at Kem3058@yahoo.com.

Awards/Scholarship Opportunities

NJ/EPA TRA Annual Conference Scholarship

Are you a student or practitioner who would like to *attend the NJ/EPA TRA 2011 Fall conference in Princeton for FREE*? The NJ/EPA TRA is excited to offer three conference grants this year: 2 TR student grants and 1 TR professional practitioner grant.

Recipients of these conference grants will be entitled to free registration and partial hotel accommodation at the 14th Annual conference scheduled for November 14th and 15th at the NJ Hospital Association Conference Center in Princeton, NJ. This registration includes more than an opportunity to observe quality educational sessions. It also includes unique networking opportunities with professionals in the field, conference/educational materials, parking, meals and snacks.

Our grant recipients will be required to assist in a volunteer capacity throughout the conference day. Volunteer duties could include serving as a room host/CEU monitor, assisting with registration or performing other conference duties. Student grantees will be expected to serve on the NJ/EPA TRA Board for one year as a student ad hoc member, choosing to either assist in a committee role or to highlight your conference experience by submitting a brief e-mail blast article sharing your experience and how you have benefited from attendance and involvement within NJ/EPA TRA. The TR practitioner recipient will be asked to do both of the above, becoming involved in an NJ/EPA TRA committee during 2012 as well as by submitting an article to go out to our members in one of our e-mail blasts. Now that's not too much to ask, is it? WOW! Think of all you could learn about professional organizations and special event planning.

Have I raised your interest? Go to our website at <http://www.njepa-tra.com> to download a grant application or email our scholarship coordinator, Amber at adhauer@gmail.com for more information. Please note that there are 2 distinct applications, one for students and one for professionals. **All applications are due by September 30th.**

ATRA Poster Contest

*Reminder about ATRA Poster contest (Entry deadline is August 15, 2011)
ATRA "Promote Our Profession" Poster Contest! Win Up to \$250!*

General Rules

- Entries may be in any size: landscape or portrait format.
- Must be original slogan and original artwork.
- No syndicated or copyrighted images!
- Reproducibility of the poster will be a factor in the judges' decisions, so use readable fonts, high contrast and bright colors!
- Entries must be received electronically in a .jpeg or .pdf format by the ATRA office:
<http://atra-online.com/displayemailforms.cfm?emailformnbr=164826>.
- Entry deadline is August 15, 2011.
- Entries must be submitted by a current ATRA member.
- Prizes: \$250 for first place, \$150 for second place, \$100 for third place winners.
- All winning posters will be offered for sale through the ATRA bookstore.
- Winners will be recognized in the ATRA Newsletter and on the ATRA website.
- Submissions become the property of The American Therapeutic Recreation Association, with the creator(s) retaining credit for the submission.

Themes

- The poster and slogan must be original concepts
- The poster should be artistic, positive in approach, and focus on promotion of RT/TR as a viable healthcare option.

Judging:

The posters will be disseminated electronically for vote by all ATRA members:

- Quality of design
 - Creativity and originality of the artwork
 - Creativity and originality of the slogan
 - Appropriate theme using "positive" approach to represent our profession
 - Reproducibility
-