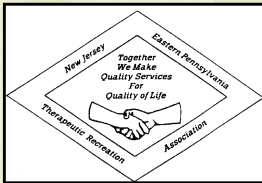


# February/March '11

New Jersey/Eastern Pennsylvania Therapeutic Recreation Association

## A MESSAGE FROM THE PRESIDENT



Dear NJ/EPA TRA Members and Friends,

As mentioned in the President's message last month, the Board of Directors has established goals and a plan for the chapter that reflect the expressed desires of our membership and will continue to strengthen the organization during 2011. Our goals for this upcoming year are as follows:

- Organizational – Propose revisions to existing by-laws and obtain membership approval for those changes, to better reflect the current operation of the chapter.
- Financial – Obtain tax exemption status and support initiation of electronic payment methods via PayPal (or similar method) for membership and conference fees.
- Professional – Explore the possibility of professional licensure for PA and NJ.

### INSIDE THIS ISSUE:

Board Updates	2
Committee Updates	3-6
Membership Update	7
Educational Opportunities	8-9
Award/Scholarship	10-11
NCTRC Update	12
E-News Blasts Recap	12
Spotlight on TR	13

I'd like to take a few moments to update you on the status of our goals thus far. In this newsletter you'll see a request from Erin Moore asking for volunteers (we'd like 5) to form a workgroup to focus on the revisions to the by-laws. The 2010 BOD made significant headway with this project last year, so Erin's team will examine the suggested changes and finish up the process. Related to the Financial Goal, you may have heard about the dissolution of the New England Therapeutic Recreation Association chapter (NETRA) this past year. Without boring you with details, there were problems related to tax penalties due to tax law changes, etc. As a result of this, we've hired a CPA to review our chapter's tax status for the past 5 years to make sure that we are not in a similar situation. Rest assured, we are fine and the taxes have been filed for this year. Through this process we've become much more aware of the pitfalls of selling items like spirit wear, since all profits are considered taxable income. With the financial condition of the governments in both NJ and PA, every organization is under scrutiny, even those considered non-profit like ours. Because of these factors we have decided to not pursue the sale of TR spirit wear at this time.

I would like to formally thank Julia Fries for all of her work as the chapter Secretary since she took office at the end of 2009. She will be transitioning off of the BOD to await the arrival of her new child. Rachael Moore has graciously agreed to fill in for the remainder of the term.

As always, please let one of the BOD know how we can serve you better. Take care and stay safe.

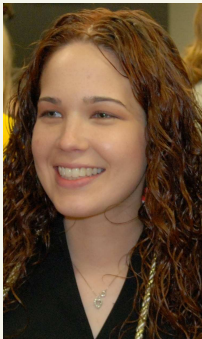
Sincerely,  
Anne Richard, MS, LRT/CTRS  
2011 NJ/EPA TRA President

## BOARD OF DIRECTORS UPDATES

We would like to wish Julia Fries farewell as she steps down from her position on the BOD as Secretary, and good luck with the new baby!

---

We welcome Rachael Moore into the secretarial position on the Board of Directors!



Rachael Moore graduated from Temple University in May 2010 with a Bachelors of Science in Therapeutic Recreation. As an undergraduate student, Rachael completed internships at Intercommunity Action, Inc. and Brandywine Hospital. As a student she was a Diamond Peer for Dr. Rhonda Nelson's adapted sports and inclusive leisure class. She also was awarded the Outstanding Senior in Therapeutic Recreation Award by Temple University's therapeutic recreation faculty. She has co-presented at the NJ/EPA TRA Fall Conference in 2009 with Dr. Rhonda Nelson and in 2010 with Dr. Susanne Lesnik-Emas. Rachael is currently working at MossRehab's NJ Clubhouse which is a division of The Drucker Brain Injury Center's outpatient rehabilitative services. Rachael has also recently co-presented at the ATRA Mid-Year with Dr. Susanne Lesnik-Emas.

---

We are also searching for a member interested in learning about our vacant **NJ Member at Large** position. This is a 2 year term that started in November 2010 and the individual must reside in NJ.

The duties/responsibilities for this position include:

- Serves as liaison for members who live in NJ.
  - Monitors relevant legislative issues and participates in State Public Policy initiatives.
  - Represents chapter through involvement in ATRA Membership calls.
  - Attends all scheduled board meetings and membership meetings.
  - Contributes to discussions and deliberations on all affiliate business issues.
- Submits articles/information to the e-mail blasts and newsletters as assigned.

**E-mail Heather Burket at [hkaten@gmail.com](mailto:hkaten@gmail.com) with questions, to learn more about the role, responsibilities, as well as time commitments for this position.**

---

### **We need your help!**

The BOD is looking for volunteers to serve on a committee to assist in reviewing our bylaws. Our organization's bylaws need to be changed to reflect our current use of electronic communications as well as the growth of our organization. If you are an NJ EPA TRA member and interested in helping please contact **Erin Moore at [moore.erin.k@gmail.com](mailto:moore.erin.k@gmail.com)**. We are looking for 4-5 people to provide feedback and suggestions to the board of directors before the bylaws are submitted to the membership for approval.

## EDUCATION COMMITTEE UPDATES

### *Fall-Conference Wrap-up Written by Erin Moore, CTRS*

The New Jersey/Eastern Pennsylvania Therapeutic Recreation Association's 13th annual two-day fall conference was held at the New Jersey Hospital Association's Conference Center in Princeton, NJ on November 8-9, 2010. This year we had increased attendance on Monday, a combination of 147 professionals, educators, and students. The event continued to offer the opportunity to attend a variety of sessions each day, collaborating to support our individual jobs as well as our profession. It also provided opportunities for attendees to network, socialize, and share information.



This year's theme was "REConnecting with our Resources, Collaborating with our Teams" and all conference attendees received small magnetic notepads which included our association's logo; these were chosen to encourage everyone to remain connected to the ideas generated at the conference. Mary Ann Aquadro, ATRA's current president, provided the keynote on Monday and highlighted ATRA's efforts to advocate for the needs of our profession. Norma Stumbo provided a second keynote address on Tuesday which highlighted ten principles to encourage everyone to be healthier and happier. We also congratulated this year's student conference grant recipient: Katelyn Barry of Temple University.

This year's conference would not have been possible without the unwavering support of the 2010 conference committee and the 2010 Board of Directors. Many thanks to ALL who volunteered, presented, set-up, and assisted with the many other small details that are so important to make the conference happen. Special thanks to everyone who stepped in to help and provide additional help when needed.

### ***Internship Directory***

If you are interested in posting in an internship at your facility to NJ/EPA Internship Database please email Cynthia Franklin at [cidfish529@yahoo.com](mailto:cidfish529@yahoo.com)

### ***\*Committee Members:***

Amber Hauer, **Jennifer Honeyford**, Sherry Hurwitz, **Suzanne DeMauro**, Jen Wheeler, Suzanne Lesnik-Emas, Sherry Hurwitz, Erin Moore, **Kaylee McGuire**, and **Cynthia Franklin**.

*\*New committee members in blue*

## FUNDRAISING COMMITTEE UPDATES

Our Fundraising Committee is working to coordinate fun and family-friendly events to help raise money for NJ/EPA TRA this spring/summer.

*Watch your inboxes for e-mail blasts advertising this upcoming event!*

It's not too early to start thinking about our Fall Conference Annual Silent Auction. Do you frequent a small business regularly such as a retail store or restaurant and know the owner or manager? Perhaps you have connections to a cultural or sporting venue? If you know of an organization that might be willing to donate items for the Fall Silent auction or have new items at home that you can't use and are looking to get rid of, please contact Marlene Rivera, our fundraising chair at the email address below and share your resources for the profession.



Remember that any money fundraised in 2011 will go toward the provision of our Professional and Student Scholarships at our Annual Fall Conference!

### **Committee Members:**

Marlene Rivera, **Corinne Albrecht**, and **Linda Suarez**

## COMMUNICATION COMMITTEE UPDATES

### **Job listings**

If you are interested in posting a job on NJ/EPA TRA's website please contact Kaylee McGuire at kem3058@yahoo.com. Listings will be posted for 3 months and are free for members; a \$10 donation is suggested for non-members.

### **TR Spotlight**



Every newsletter contains a *TR Spotlight* featuring something special a member of our TR community brings to us. We are always looking for professionals to share their experiences with us! If you are interested please contact Kaylee McGuire at kem3058@yahoo.com for more information.

### **Committee Members:**

Colleen Worth and **Kaylee McGuire**



## LEGISLATION COMMITTEE

The legislative committee is looking for new committee member involvement. If you are interested in learning about Public Policy issues in TR, or have knowledge that you would like to share with our co-chairs about legislative issues, please contact Evan Barker at [ebarker@gsrh.org](mailto:ebarker@gsrh.org).

### ***NJ Member at Large Vacancy***

Keep in mind that we are still looking for a member to serve on the board as NJ Member at Large. Please contact Heather Burket at [hkatengmail.com](mailto:hkatengmail.com) for more information.

### ***Committee Members:***

Evan Barker and Sherry Hurwitz.

## NETWORKING, OUTREACH AND ADVOCACY COMMITTEE UPDATES

It's game time!

The N.O.A. Committee, thanks to committee member Marlene Rivera, has set the date for a ***fun and family friendly social networking opportunity*** this summer. NJEPA TRA members, along with their family and friends, are invited to join us on **July 17th** at 1:05pm to watch the Trenton Thunder Minor League Baseball Team take on the Reading Phillies at Mercer County Waterfront Park in Trenton, NJ. This is an affordable event and tickets will be available soon. Please save the date!

For more information, contact Marlene Rivera at [marlene.ctrs@gmail.com](mailto:marlene.ctrs@gmail.com).



The N.O.A. Committee is also researching opportunities for social gatherings in Northern/Central NJ, Philadelphia Metro and the Lehigh Valley areas. If you have any ideas or would like to assist in organizing these networking events, please contact Kim Grandal at [kimgrandal@aol.com](mailto:kimgrandal@aol.com). The N.O.A. Committee consists of:

*TR Week Baseball Social:* Marlene Rivera, CTRS (Trenton, NJ- Central)

*Annual Conference Social:* Jen Wheeler, CTRS (Princeton, NJ- Central)

*Northern NJ Social:* **Suzanne DeMauro** (Northern NJ)

*Philadelphia Metro Social:* **Karin Tsantalís**, CTRS (Philadelphia Metro)

*Lehigh Valley Social:* Evan Barker, CTRS (Lehigh area)

*Discount on NJ Nets Tickets:* David Boyle, CTRS (Northern NJ) Contact David directly if you would like to purchase discounted NJ Nets Tickets at 201-390-9321

## NOMINATIONS COMMITTEE UPDATE

Our Nominations Committee is seeking a member to serve on the committee in order to assist in recruitment and potential election of future board and committee members.

We are especially interested in assistance from a member living in Northern/Central New Jersey.

Please contact Heather Burket at [hkaten@gmail.com](mailto:hkaten@gmail.com) for more information.

### ***Committee Members:***

Rhonda Nelson and Angela Vauter

## PAST BOARD OF DIRECTORS COMMITTEE UPDATE

Past Board of Director's Council is looking for old photos from prior NJ/EPA TRA conferences and social events.

Please send photos to Sarah Humes at [stelthorster@yahoo.com](mailto:stelthorster@yahoo.com)  
Please identify estimated year, location, and people in photos if possible.



### ***Committee Members:***

Amy Long, Sarah Humes, and Erin Moore

The total member count for NJ/EPA TRA at the end of February was 64,  
8 of which are students!

Just a friendly reminder that if you have not renewed your New Jersey/Eastern Pennsylvania Therapeutic Recreation Association Membership for the 2011 year, now is the time to do so! At the end of March, the 2010 membership list will be purged and only those who have renewed by March 29 for 2011 will remain on the e-mail distribution list.

There are many benefits to being an active member of NJ/EPA TRA including email news blasts, reduced registration fees for conferences/workshops, resource information, and many more!

Renewal reminders for the 2011 year have been sent out. If you did not receive one or have misplaced it you can print a membership application at:

<http://www.njepa-tra.com/membership.htm>

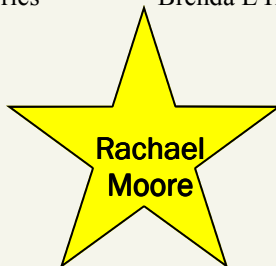
If you have any questions about membership or have had any changes such as an address, e-mail, or phone number change please contact Patrick Cahill at [Cahill0829@aol.com](mailto:Cahill0829@aol.com) so you can continue to receive all of your membership benefits. Thank you for your continued support of your ATRA Affiliate!

**Membership Committee Members:**

Patrick Cahill, **Cynthia Franklin**

**NJ/EPA TRA would like to thank the following members for either joining NJ/EPA TRA or renewing their membership from mid-January through March 2011 :**

Heather Burket	Michelle Lee Fugett	Donna Horner	Rhonda Nelson	Charles Williams
Stasia Chabon	Dotty Gardler	Amanda Jones	Colleen Shartle	Colleen Worth
Kelly Conlin	Tammy George	Stephanie Knast	Teresa Simoes	
Sheila Finamore	Rebekah Gilbert	Mary Marie	Adrianna Smith	
Pam Fleck	Rachel Gucwa	Melissa McCulley	Raissa Tkach	
Bobbi Freedman	Carleigh Haag	Casey McKee	Angela Vauter	
Julia Fries	Brenda L Hart	Robin McNeal	Barbara Wilhite	



# Congratulations!

Just accepted a new full-time position at  
Drucker Brain Injury-NJ Clubhouse at Moss  
Rehab as a  
Unit Coordinator

Are you celebrating an exciting milestone in your life that you would like to share with your colleagues? (i.e. engagement, marriage, new baby, graduation, new job, etc) NJ/EPA TRA would be glad to acknowledge your personal and professional achievements by posting a congratulatory message within our next E-newsletter. Please e-mail Kaylee McGuire at [kem3058@yahoo.com](mailto:kem3058@yahoo.com).

## EDUCATIONAL OPPORTUNITIES

### **Metro Recreation-Continuing Education for Recreation Therapists & Activity Leaders**

Available at the following locations:

Somerset Gardens Assisted Living in Plainview, Long Island

Cedar Manor in Ossining, NY

Nassau Extended Care Center in Hempstead, NY

Sheepshead Nursing and Rehabilitation Center in Brooklyn, NY

Morris Hall in Lawrenceville, NJ

(Session details on flyer available online)

<http://www.metro-recreation.com/2010MetroWebsiteEd&TrRobinWexler2011flyer.pdf>



### **Continuing Education opportunities through the National Council of Certified Dementia Practitioners**

Variety of opportunities; details available through link below

<http://www.nccdp.org/nccdpnewsletter28.htm>

### **Program Planning for Therapeutic Recreation through ACES at the University of Florida**

Online course for CEU's (Not available for college credit)

Robert M. Beland, PhD; [rbeland@hnp.ufl.edu](mailto:rbeland@hnp.ufl.edu)

<https://aces.dce.ufl.edu/Courses/Course.aspx?cld=101>

### **ATRA 2011 Teleconference Series**

2011 calendar has been posted on the ATRA website

<http://atra-online.com/associations/10488/files/Webinars2011.pdf>

### **Mideastern Symposium on Therapeutic Recreation**

@ Clarion Resort, Fontainebleau Hotel, Ocean City, MD

May 22-24, 2011

<http://mideastsymposium.com/>

### **ATRA Annuals in Therapeutic Recreation**

ATRA Annuals are collections of research articles and post-tests. These are available for CEU credit up to five years after publication. Members may view electronic versions as membership benefit.

<http://atra-online.com/displaycommon.cfm?an=5>

Check out the **New Jersey Hospital Association website** for a myriad of CEU offerings and Webinars available to you throughout the year as NJ/EPA TRA members.

<http://www.njha.com/education/conted.aspx>

**E D U C A T I O N A L  
O P P O R T U N I T I E S C O N T I N U E D**

**Pennsylvania Therapeutic Recreation Society 43<sup>rd</sup> Annual  
Pennsylvania Therapeutic Recreation Institute**  
@ Harrisburg/ Hershey Holiday Inn, Grantville, PA  
June 8-11, 2011

<http://www.ptrs.org/conference.htm>

**ATRA Annual Conference**

Indianapolis, IN  
September 18-21, 2011

<http://atra-online.com/displaycommon.cfm?an=5>

***New Jersey/Eastern Pennsylvania Therapeutic Recreation Association  
14<sup>th</sup> Annual Fall Conference***

@ New Jersey Hospital Association Conference Center in Princeton, NJ  
November 14-15, 2011

Please continue to check our website for information updates.

<http://www.njepa-tra.com/continuingeducation.htm>

Please visit our website at <http://www.njepa-tra.com/continuingeducation.htm>  
for other local CEU opportunities.



Would you like to advertise another Educational Opportunity that you know of on our website or within our E-newsletter? Please share your information with our Communication Committee Chairman, Kaylee McGuire at [Kem3058@yahoo.com](mailto:Kem3058@yahoo.com).

**A W A R D S / S C H O L A R S H I P O P P O R T U N I T I E S*****Mideastern Symposium Student Scholarship***

The Mid-Eastern Symposium on Therapeutic Recreation provides an opportunity for one full-time undergraduate or graduate student studying therapeutic recreation in college/university programs to attend the Symposium with a scholarship that entitles the chosen scholar to free registration and hotel accommodations at double occupancy rate. The scholarship recipient is expected to provide and pay for his or her own transportation. By attending such an experience, it is hoped that the student will gain a broader perspective of therapeutic recreation, trends, issues and state of the art practice. It is expected that the student will share his or her experience with fellow students, colleagues and professors, help at the Mid-Eastern Symposium held on May 22-24, 2011 in Ocean City, Maryland and act as an ad-hoc member of the Board of Directors the year following the conference attended. Scholarship Applications must be received by **April 3, 2011**. Please visit the Mideastern Symposium website at <http://mideastsymposium.com/studentscholarship.htm> to review eligibility and to download a scholarship application.

---

***PTRS William P. Dayton Memorial Student Scholarship Award***

This scholarship provides a Full-time student in TR, complete registration to the Annual Pennsylvania Therapeutic Recreation Institute. The Registration covers room, meals, and educational sessions. The scholarship is supported by a special memorial fund established in William P. Dayton's honor due to his significant contributions to PTRS and the overall recreation and parks profession. Application deadline has not been listed yet so please keep checking the PTRS website for the updated information. <http://www.ptrs.org/awards.htm>.

---

***PTRS Edward W. Moyer Memorial Professional Scholarship Award***

This scholarship provides a Certified Professional under PRPS, NCTRC, or NCCAP, complete registration to the Annual Pennsylvania Therapeutic Recreation Institute. The registration covers educational sessions, room and meals. The scholarship is supported by a special memorial fund established in Edward W. Moyer's honor due to his dedication to furthering the Therapeutic Recreation profession. Application deadline has not been listed yet so please keep checking the PTRS website for the updated information. <http://www.ptrs.org/awards.htm>.

---

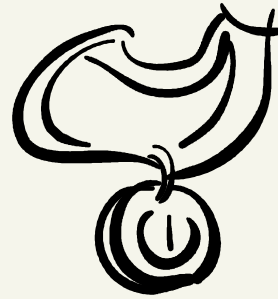
***ATRA Linda Levine-Madori Scholarship***

This scholarship provides financial support to TR students or professionals who wish to attend this year's Annual ATRA 2011 conference. Applicants must be an ATRA member in good standing and a single parent. The Linda Levine-Madori Scholarship is sponsored in full by Linda Levine-Madori. Individuals will be chosen based on their current involvement in either their educational or professional pursuits within the field. All applications and personal statements will be considered and must be submitted by **June 1, 2011**. For questions about the nomination process or to request an application, please contact ATRA representative Carolee Rodrigo at [carolee.rodrigo@yahoo.com](mailto:carolee.rodrigo@yahoo.com).

**A W A R D S / S C H O L A R S H I P O P P O R T U N I T I E S*****ATRA Awards Program***

It's time to recognize those outstanding individuals and organizations who have supported our profession! The ATRA Awards Program is comprised of eleven awards, plus the Peg Connolly and Linda Levine-Madori Scholarships, open to all ATRA members in good standing:

- I. Distinguished Fellow
- II. Outstanding Professional
- III. Member of the Year
- IV. Individual Citation
- V. Organization/Institution Citation
- VI. Certificate of Recognition
- VII. Frank N. Brasile Clinician of the Year
- VIII. Excellence in Education
- IX. Scholarly Achievement
- X. Chapter Affiliate of the Year
- XI. Advocacy



Please review [awards criteria](#) before submitting [your nomination](#). Awards will be presented at the Annual Conference in Indianapolis, IN. Submit nominations or questions about the nomination process to ATRA representative Julie Foster at [ctrsjulie@embarqmail.com](mailto:ctrsjulie@embarqmail.com) by June 6th.

---

***NJ/EPA TRA Professional and Student Scholarships***

NJ/EPA-TRA offers two student scholarships and one professional scholarship to attend our Annual Fall Conference. Recipients of these conference grants will be entitled to free registration and partial hotel accommodation at the 14th Annual conference at the NJ Hospital Association Conference Center in Princeton, NJ. This registration includes more than an opportunity to observe quality educational sessions. It also includes unique networking opportunities with professionals in the field, conference/educational materials, parking, meals and snacks. These scholarships are "working scholarships". Volunteer duties may include serving as a room host/CEU monitor, assisting with registration or performing other conference duties. Student grantees will be expected to serve on the NJ/EPA TRA Board for one year as student ad hoc member, choosing to either assist in a committee role or to highlight your conference experience by submitting a brief e-mail blast article sharing your experience and how you have benefited from attendance and involvement within NJ/EPA TRA. The TR practitioner recipient will be asked to do both of the above, becoming involved in an NJ/EPA TRA committee during 2011 as well as by submitting an article to go out to our members in one of our E-newsletters. Continue to check the NJ/EPA TRA website at <http://www.njepa-tra.com/continuingeducation.htm> for applications and information regarding application deadlines.

## UPDATES FROM NCTRC

Beginning with the May 2010 renewal cycle, NCTRC will notify CTRSs of their pending renewal date by email or postcard. Printed application packets will be available only by request by calling 845-639-1439. It is expected that this decision will result in a decrease in paper applications and therefore, allow NCTRC to become a brighter shade of green.

For those individuals who need to recertify or renew during the current renewal cycle, NCTRC would like to remind you that the deadline for submitting your application and fee is quickly approaching:

- If you are due to submit your **annual maintenance** application and fee, please do so by May 1st.
- If you are due to **recertify** this November, an application was mailed to you by postal mail if you are in active standing. If you have not submitted your application and fee, please do so in order to waive the \$50.00 recertification fee. Please submit your recertification application and fees by December 31, 2010 to avoid forfeiting your CTRS credential.

You may submit your application on-line by going <http://www.nctrc.org/index.htm>  
Please contact NCTRC at 845-639-1439 if you have any questions or concerns.

## NEWS BLAST RE-CAP

Help your stroke patients by subscribing to  
<http://www.strokesurvivor.com/>

A great resource including but not limited to the following:

- ◆ Articles and tips for survivors, caregivers, and professionals
- ◆ Archives of monthly newsletters
- ◆ Books and dictionaries for aphasia and speech
- ◆ Readings to build self-esteem
- ◆ “Paul-tested products” for one-handed living

Contact Paul at

Email: [info@strokesurvivor.com](mailto:info@strokesurvivor.com)

Phone: 703-241-2375

Address: P.O. Box 2644, Merrifield, VA 22116

A decorative graphic consisting of a white oval with a black, jagged, sunburst-like border, centered at the top of the page.

## SPOTLIGHT ON TR

### Self Reflections from the 2010 NJ/EPA TRA Student Scholar

*By: Katelyn Barry at Temple University*

I had a wonderful experience at the 2010 annual TRA fall conference. Winning the scholarship not only allowed me to attend the conference, but also gave me great insight to the behind-the-scenes efforts of the Board and allowed me to make connections with a great amount of professionals in the field. The scholarship gives opportunities that enhance the conference experience in ways that most students do not have access to. I am very grateful that I had this opportunity and urge other TR students to apply for the scholarship this coming fall.

Upon my arrival to Princeton, I was kindly welcomed by the Members of the Board and introduced to everyone who was working hard to make this conference happen. Until this opportunity, I had underestimated how much work goes on behind the scenes. I worked along side other TR professionals, discussing work experience, opportunities in the Philadelphia area, and my plans for the future. I received valuable advice and suggestions that I believe will help me as a young professional. Throughout my two days at the conference, I had the chance to attend many interesting sessions on various populations, settings and modalities. I enjoyed learning new skills and thinking of how they could be incorporated into my senior internship.

I believe this experience has heightened my education as a TR student and would like to advise TR students to take the time to apply for the scholarship. Not only is this a chance to learn from professionals and meet fellow students, but also this may be a great opportunity to make connections for an internship or volunteer site.

I would like to thank the Members of the Board for all of their support, dedication and hard work. □

Kate Barry,

Temple University