



# New Jersey/Eastern Pennsylvania Therapeutic Recreation Association

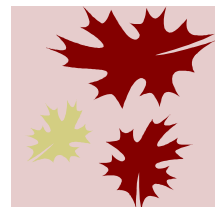
NJ/EPA TRA Newsletter

August/September 2011

## Message from the President

Dear NJ/EPA TRA Members and Friends,

As we all head back to school and remember our summer vacations with fondness, the NJ/EPA TRA board of directors is gearing up for that final push in preparation for our annual fall conference. This is scheduled for November 14-15th at the New Jersey Hospital Association Conference Center in Princeton, NJ. The theme of this year's conference is "PaRTnering in Progress". At a glance, the conference program has a little something for everyone, so we hope to



### Inside this issue:

Board Updates	2
Committee Updates	3-6
Membership Update	7
Educational Opportunities	8-9
RECOgnition Awards	10
News Blasts	11

see you there. Please check our website in the near future to review the program and register online; everything will be posted very soon. We're also hoping that you'll take advantage of our online registration this year using PayPal since many of you expressed an interest in using an electronic payment option.

Much of the remainder of the year will likely be devoted to issues pertaining to the conference, so I thought that it might be a good time to update you on the status of our goals. Our goals for this year are as follows:

- Organizational* – Propose revisions to existing by-laws and obtain membership approval for those changes, to better reflect the current operation of the chapter.
- Status* – The BOD will be taking a final look at the proposed revisions in the near future and then they will be made available for membership vote.
- On a related note, we've learned that we're required to be incorporated in both NJ and PA, since we serve both states. We are currently only incorporated in PA, so we're taking steps to move this forward.
- Financial* – Obtain tax exemption status and support initiation of electronic payment methods via PayPal (or similar method) for membership and conference fees. We now have electronic payment via PayPal available for membership renewal and conference fees on our website. We continue to explore options for the least costly method of regaining tax exemption status.

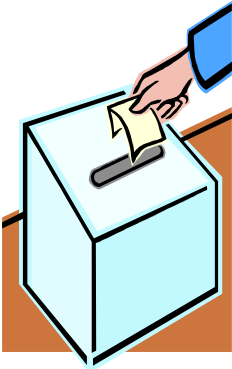
*Professional* – Explore the possibility of professional licensure for PA and NJ. Based on the feedback that we're hearing from ATRA chapters in other states and the current political situation in NJ and PA, our exploration of licensure has been put on hold until things stabilize and the political climate is calmer.

As you can see, we continue to make progress with our goals, but the entire BOD is getting a quick course on tax and incorporation laws. We are encouraged by the progress that we've made and I truly feel that we are in a much better place than we were at the beginning of the year. Please take a few minutes to read through the newsletter and as always, don't hesitate to let any of the BOD know how we can serve you better.

Sincerely,  
Anne Richard, MS, LRT/CTRS  
2011 NJ/EPA TRA President

## Board of Directors Update

### Nominations for 2012 Board of Directors



Nominations for the 2012 Board of Directors: The 2011 Board of Directors and Nominations Committee is now accepting nominations for our 2012 Board of Directors Ballot. Open positions include PA Member at Large, Secretary, and President-Elect. If you are interested in nominating yourself or would like to nominate someone you know for a position on the 2012 Board of Directors, please e-mail Heather Burket at [hkaten@gmail.com](mailto:hkaten@gmail.com). All candidates will be considered and will be asked their intent to serve prior to being placed on the ballot.

See next page (3) for description of open positions.

### Meet the Board of Directors

President: Anne Richard, MS, LRT/CTRS

President-Elect: Kim Grandel, CTRS

Past President: Heather Burket, Ed.M., CTRS, CCLS

Secretary: Rachael Moore, CTRS

Treasurer: Jennifer Honeyford, CTRS

PA Member at Large: Evan Barker, CTRS

NJ Member at Large: Aimee Montgomery-Wilson, CTRS



# Education Committee Update

## NJ/EPA Therapeutic Recreation Association's 14th Annual Fall Conference "PaRTnering in Progress"

NJ Hospital Association Conference Center  
760 Alexander Road, Princeton, NJ

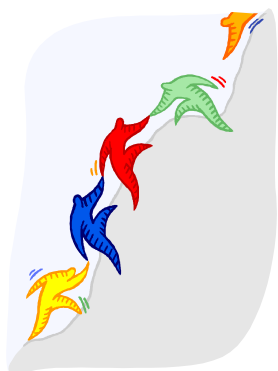
Please visit [www.NJEPA-TRA.com/continuingeducation.htm](http://www.NJEPA-TRA.com/continuingeducation.htm) for additional Conference Registration information (online payment now accepted!), application, full program, and information about student and professional scholarships, and volunteer opportunities.

Conference Fees	Early Bird Postmarked by 10/22/11		Regular Postmarked by 10/29/11		On Site Postmarked after 10/30/11	
	Full Conf.	Daily	Full Conf.	Daily	Full Conf.	Daily
Member	\$140	\$90	\$160	\$100	\$205	\$110
Non-Member	\$170	\$105	\$200	\$115	\$255	\$125
Student Member	\$65	\$40	\$70	\$45	\$75	\$50
Student Non Member	\$85	\$50	\$90	\$55	\$95	\$60
Continuing Ed. Units	<b>\$10.00</b> (1.15 CEUs total for full conference = 11.5 hours of continuing education)					

## **Conference Volunteers Needed!**

NJ/EPA TRA is seeking volunteers for our 14<sup>th</sup> Annual Conference, “PaRTnering in Progress”, on November 14<sup>th</sup> and 15<sup>th</sup> in Princeton, New Jersey. Being a volunteer at the Annual Conference is a wonderful opportunity to network with professionals and become involved and familiar with the NJ/EPA TRA.

- Volunteering for BOTH Monday and Tuesday gives you a discount of \$20.00 off the Full Conference registration fee. If you are only able to volunteer one day (Monday OR Tuesday), you will receive a discount of \$10.00 off the daily conference registration fee.
- As part of our commitment to Therapeutic Recreation students, we offer opportunities for volunteer positions to be filled by students first. We understand that some universities require professional volunteer hours and many look to complete those hours at the conference. In order to provide a discount in recognition of our volunteers’ time, we limit our number of volunteers to **12 volunteers per day**. No “walk in” volunteers will be accepted. Professional volunteer applications will be accepted prior to the application deadline but will not be considered until after our application submission deadline has passed and all student volunteers have been selected.
- You must be a member of NJ/EPA TRA in order to be a volunteer for the conference. If you are not currently a NJ/EPA TRA Member, please fill out membership application found at our website at <http://www.njepa-tra.com/membership.htm>.
- Please visit our website at <http://www.njepa-tra.com/continuingeducation.htm> to download a volunteer application.

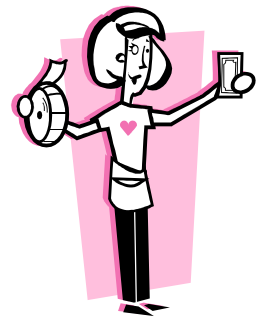


Interested? Have any questions? Please contact Amber Hauer at  
267-221-9800 and/or [adhauer@gmail.com](mailto:adhauer@gmail.com).

## Fundraising Committee Update

**You are needed! Get involved!**

Request for Silent Raffle Items: It's that time of year again! Time to start scouting for donations toward our highly anticipated Fall Silent Raffle. In years past, we have received items such as TR and collegiate spirit-wear, themed gift baskets, restaurant gift certificates, gift cards, theatre and sporting event tickets, and home décor. Do you have any friends or family that own or manage a restaurant or retail store? Do you have any new gift-type items lying around the house that you will never use? We also need baskets, basket fillers, clear basket wraps, ribbons, scotch tape, and brown lunch bags to put raffle tickets in. Please contact Marlene Rivera at [marlene.ctr@gmail.com](mailto:marlene.ctr@gmail.com) if you have any questions related to accepted donations, to request a fundraising form letter to solicit donations from organizations you are affiliated with, or to arrange a pick-up date/time for items.



## Communications Committee Update

### *Employment Opportunities*

If you are interested in posting an employment opportunity on NJ/EPA TRA's website please contact Kaylee McGuire at [kem3058@yahoo.com](mailto:kem3058@yahoo.com). Listings will be posted for 3 months and are free for members; a \$10 donation is suggested for non-members.

### *Internship Directory*

If you are interested in posting an internship at your facility to the NJ/EPA Internship Database please email Cynthia Franklin at [cidfish529@yahoo.com](mailto:cidfish529@yahoo.com)



## Networking, Advocacy, & Outreach Committee Update

The NAO Committee has been busy organizing events and networking opportunities for NJ/EPA TRA members and friends. In July we hosted the Baseball Social in celebration of TR week! Organized by Marlene Rivera this was an "out of the park" event! More recently we had a Happy Hour Social. I would personally like to thank Karin Tsantilis, CTRS for organizing a fantastic Happy Hour Social which was held at the Public House Philadelphia, in Philadelphia, PA on Friday, August 26, 2011. Those that attended had a wonderful time despite the massive amount of rain! Events such as these offer an opportunity to socialize, network, meet new people, and have a great time. So next time we hope to see you there!



NJ/EPA TRA is on Facebook! Yes, that's right, we are now on Facebook! This is a fantastic place to share resources, network, keep abreast of news, events, and educational opportunities. The page is new, so if you have information you think others would find helpful, please email Kim Grandal at [kimgrandal@aol.com](mailto:kimgrandal@aol.com). LIKE US at <http://www.facebook.com/pages/New-JerseyEastern-Pennsylvania-Therapeutic-Recreation-Association/221140184577300>

The 2011 Board Liaison for the NAO committee is Kim Grandal CTRS, ACC/EDU. The following individuals have graciously agreed to coordinating these fabulous networking opportunities:

TR Week Baseball Social: Marlene Rivera, CTRS (Trenton, NJ- Central)

Annual Conference Social: Jen Wheeler, CTRS (Princeton, NJ- Central)

Northern NJ Social: Suzanne DeMauro (Northern NJ)

Philadelphia Metro Social: Karin Tsantilis, CTRS (Philadelphia Metro)

Lehigh Valley Social: Evan Barker, CTRS (Lehigh area)

Discount on NJ Nets Tickets: David Boyle, CTRS (Northern NJ) Contact David directly if you would like to purchase discounted NJ Nets Tickets at 201-390-9321

*If you'd like to get involved in helping to coordinate, advertise, or contribute to these socials or other events, please contact Kim Grandal at [kimgrandal@aol.com](mailto:kimgrandal@aol.com).*

## Membership Update

---

**The total member count for NJ/EPA TRA at the end of September was 112!**

Just a friendly reminder that if you have not renewed your New Jersey/Eastern Pennsylvania Therapeutic Recreation Association Membership now is the time to do so! You can print a membership application at: <http://www.njepa-tra.com/membership.htm>.

There are many benefits to being an active member of NJ/EPA TRA including email news blasts, reduced registration fees for conferences/workshops, resource information, leadership opportunities, and many more!

If you have any questions about membership or have had any changes such as an address, e-mail, or phone number change please contact Patrick Cahill at [Cahill0829@aol.com](mailto:Cahill0829@aol.com) so you can continue to receive all of your membership benefits.

**NJ/EPA TRA would like to thank the following members for either joining NJ/EPA TRA or renewing their membership during August and September 2011 :**

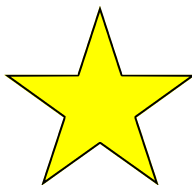
Laura Cadge, Michelle Duntzee, Amy Van Dyk, Brigid Lyons, Heather Porter, Aimee Montgomery Wilson, and Lauren Waite.

---

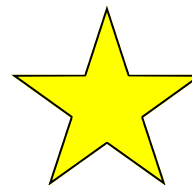
### **Congratulatory Messages**

Are you celebrating an exciting milestone in your life that you would like to share with your colleagues? (i.e. engagement, marriage, new baby, graduation, new job, etc) NJ/EPA TRA would be glad to acknowledge your personal and professional achievements by posting a congratulatory message within our next E-newsletter.

Please e-mail Kaylee McGuire at [kem3058@yahoo.com](mailto:kem3058@yahoo.com).



**Congratulations Rachael Moore on her engagement!**



**Heather Burket recently accepted a transfer within her company to work with the Inpatient Rehabilitation population at Children's Hospital of Philadelphia. Congratulations!**

---

## Educational Opportunities

---

### **New Jersey/Eastern Pennsylvania Therapeutic Recreation Association**

#### **14<sup>th</sup> Annual Fall Conference “PaRTnering in Progress”**

@ New Jersey Hospital Association Conference Center in Princeton, NJ

November 14-15, 2011

<http://www.njepa-tra.com/continuingeducation.htm>

### **17<sup>th</sup> Annual Downstate Conference**

Wednesday, November 16, 2011

@Westchester County Center, White Plains, NY 10606

<http://www.nystra.org/conference.htm>

### **Metro Recreation-Continuing Education for Recreation Therapists & Activity Leaders**

<http://www.metro-recreation.com/2010MetroWebsiteEd&TrRobinWexler2011flyer.pdf>

#### **1. Cooking Activities for Groups and Individuals in Therapeutic Recreation Activities**

How and why to develop and lead cooking activities in therapeutic recreation.

Oct 16, 2011 @ Morris Hall; One Bishops' Drive Lawrenceville, NJ 08648; Register by Oct. 2nd.

#### **2. Do Recreators Recreate?: Battling Our Own Stress & Burnout**

Even though we help other people deal with their leisure needs, why are recreation professionals at particular risk for stress and burn out? Thursday, October 27 @ Cedar Lane, Ossining NY 10562. 0.2 CEUs per session. Register by October 17<sup>th</sup>.

#### **3. Programming for Regressed Participants**

Review the needs and nature of individuals with dementia, chronic and persistent psychiatric illnesses and those with degenerative conditions. TR strategies to deal with difficult behaviors, leadership skill for enhancing the lives of the individual through goal oriented therapeutic recreation programming. Monday November 14 @ Sheepshead Nursing and Rehabilitation Center, 2840 Knapp Street, Brooklyn, NY 11235. Register by November 4.

#### **4. Cooking Activities for Groups and Individuals in Therapeutic Recreation Activities**

How and why to develop and lead cooking activities in therapeutic recreation. Nov 15 @ Nassau Extended Care Center, 1 Greenwich St. Hempstead NY 11550. Register by Nov 5th.

### **NYSTRA's 17<sup>th</sup> Annual Conference**

April 14th-17th, 2012

Holiday Inn

Saratoga Springs, NY

Contact: Tom McDonald, MPH, CTRS and Suze Colletti, CTRS at NYSTRA2012@gmail.com for more details or to submit an abstract.

---

## Educational Opportunities Continued

---

### Continuing Education opportunities through the National Council of Certified Dementia Practitioners

Variety of opportunities; details available through link below

<http://www.nccdp.org/nccdpnewsletter35.htm>

### Program Planning for Therapeutic Recreation through ACES at the University of Florida

Online course for CEU's (Not available for college credit)

Robert M. Beland, PhD; [rbeland@hhp.ufl.edu](mailto:rbeland@hhp.ufl.edu)

<https://aces.dce.ufl.edu/Courses/Course.aspx?cld=101>

### ATRA 2011 Teleconference Series

2011 calendar has been posted on the ATRA website

<http://atra-online.com/associations/10488/files/Webinars2011.pdf>

### ATRA Annuals in Therapeutic Recreation

ATRA Annuals are collections of research articles and post-tests. These are available for CEU credit up to five years after publication. Members may view electronic versions as membership benefit.

<http://atra-online.com/displaycommon.cfm?an=5>

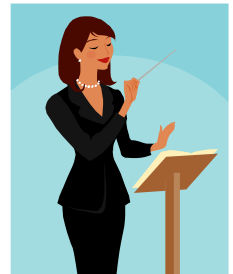
Check out the **New Jersey Hospital Association website** for a myriad of CEU offerings and Webinars available to you throughout the year as NJ/EPA TRA members.

<http://www.njha.com/education/conted.aspx>

Please visit our website at

<http://www.njepa-tra.com/continuingeducation.htm>

for other local CEU opportunities.



Would you like to advertise another educational opportunity that you know of on our website or within our E-newsletter? Please share your information with our Communication Committee Chairperson, Kaylee McGuire at [Kem3058@yahoo.com](mailto:Kem3058@yahoo.com).

---

## Awards/Scholarship Opportunities

### Annual NJ/EPA TRA RECOgnition Awards

#### **NOMINATIONS BEING ACCEPTED THROUGH OCTOBER 15th.**

Please take a moment to RECOgnize a few of your fellow Therapeutic Recreation Specialists. Please send an e-mail including nominee's name, award nominated for, place of work, title, and a detailed description of why you feel the nominee is deserving of an award. May include statements from co-workers, clients, etc. Please include your own contact information. Nominee must be a member of NJ/EPATRA to be considered.

Submit nominations to Amy Long at [amy\\_long17@hotmail.com](mailto:amy_long17@hotmail.com)

Nominate a worthy candidate for one of the following categories:

1. **Excellence in Therapeutic Recreation:** Professionals will be recognized for the year 2010-2011. Nominate candidates who have demonstrated outstanding service in the field.
2. **Excellence in Therapeutic Recreation by a Young Professional-** 1 Young Professional will be recognized for the year 2010-2011. Nominate candidates with 2 years or less of experience who have exhibited outstanding service to the field of TR.
3. **Innovation Award-** Awarded to a TR professional who has implemented an innovative program related to the field of TR.
4. **Service Award-** Awarded to a TR professional who has provided excellent service outside the working environment (i.e. non- profit organizations, affiliate work, professional organization involvement, legislation, etc.)

Please visit <http://www.njepa-tra.com/scholarshipsandawards.htm> for additional details about Awards and Scholarship opportunities and to download awards applications.

## E-News Blast Recap

---

### ***THE NATIONAL COUNCIL OF CERTIFIED DEMENTIA PRACTITIONERS®, LLC***

For the fourth year, the National Council of Certified Dementia Practitioners is offering The National Council of Certified Dementia Practitioners Alzheimer's and Dementia Staff Education Week February 14th to the 21st Tool Kit. The Tool Kit is free and available at [www.nccdp.org](http://www.nccdp.org). The tool kit includes many free Power Point in-services for download beginning November 15th to March 1st 2011. Each in-service is designed to be taught in 30 minutes to health care professionals and front line staff.

The Tool Kit and the declaration by the NCCDP Alzheimer's and Dementia Education Week February 14th to the 21st was developed to bring national and international awareness to the importance of providing comprehensive dementia education by means of face to face interactive classroom environment to all healthcare professionals and line staff and to go above and beyond the minimum state requirements regarding dementia education.

---

### ***The Dorland Health Care Coordination Summit***

will delve into topics necessary for those who work in managed care, acute care, the military, long-term care behavioral health, rehabilitation, home care, or another setting through which consumers access healthcare. The only event designed for all members of the care coordination team, the Care Coordination Summit provides participants with the insight, the strategies and the tactics to improve the performance of their organization so as to improve the quality of care while reducing costs. The Dorland Health Care Coordination Summit will be held Friday, October 21st, from 8:00am-5:15pm at the National Press Club in Washington, DC.

Dorland Health, an Access Intelligence, LLC Company, is a leading publisher and media company providing education, training, tools, information resources, guidance and practical advice for practitioners and specialists in the healthcare field. Dorland Health services include the Professional Patient Advocate Institute, Case In Point, Case In Point Weekly, OR Manager, Patient Advocate Report, industry-specific resource directories and reports, conferences and events, webinars, award programs, special reports, and offers continuing education credit.

Contact info: Hope Kabik, 301.354.1769, [hkabik@accessintel.com](mailto:hkabik@accessintel.com)  
[www.dorlandhealth.com/care\\_coordination\\_summit](http://www.dorlandhealth.com/care_coordination_summit)

---

