

April/May '11

NJ/EPA TRA NEWS

New Jersey/Eastern Pennsylvania Therapeutic Recreation Association

A MESSAGE FROM THE PRESIDENT



Dear NJ/EPA TRA Members and Friends,

Happy spring! It seems hard to believe that we are already moving into the summer months of vacations and outdoor fun. During TR Week (July 10-16, 2011), you'll have the opportunity once again to enjoy socializing with your friends, colleagues, and family at the Trenton Thunder minor league baseball game. This was a blast last year and the tickets are still selling for only \$10. A portion of the proceeds will come back to NJ/EPA TRA to benefit our 2011 Fall Conference scholarship fund. Please watch for ordering information! Now, moving from the topic of fun on to more serious matters... We have continued to make progress on our chapter goals and are in the process of transitioning to a new webmaster. We want to thank Colleen Worth for her years of work on this valuable member benefit. As part of this transition, we will be tweaking the website so that there will be some sections that are accessible only to NJ/EPA TRA members (per your request) and also adding a PayPal link for online payment of memberships, registrations, etc. Again, this was another request from the membership. We are excited about this enhancement and look forward to letting you know when it is available. The committee has also begun looking at proposed changes to our by-laws, so you will be hearing more about that in the future.

As always, please let one of the BOD know how we can serve you better. Take care and stay safe.

Sincerely,
Anne Richard, MS, LRT/CTRS

INSIDE THIS ISSUE:

Board Updates	2
Committee Updates	3-8
Conference Call for Papers	4
Fundraiser Flyer	6
Membership Update	9
Educational Opportunities	10-11
Award/Scholarship	12
E-News Blasts Recap	13-14
Spotlight on TR	15

BOARD OF DIRECTORS UPDATES***Vacant Position on the Board***

We are still searching for a member interested in learning about our vacant **New Jersey Member at Large** position. This is a 2 year term that started in November 2010 and the individual must reside in NJ.

The duties/responsibilities for this position include:

- Serves as liaison for members who live in NJ.
- Monitors relevant legislative issues and participates in State Public Policy initiatives.
- Represents chapter through involvement in ATRA Membership calls.
- Attends all scheduled board meetings and membership meetings.
- Contributes to discussions and deliberations on all affiliate business issues. Submits articles/information to the e-mail blasts and newsletters as assigned.

E-mail Heather Burket at hkaten@gmail.com with questions, to learn more about the role, responsibilities, as well as time commitments for this position.

***Congratulations NJ/EPA TRA!***

The Board recently applied for the 2011 ATRA Chapter Advisory Council Incentive Program grant funding, offered to Chapter Affiliates by ATRA in order to help Chapters meet their annual strategic goals. We have just received notification that our grant proposal was approved! Grant funding will support the costs of updating our Website and ensuring that we remain a legally sound organization via the assistance of tax accounting experts.

EDUCATION COMMITTEE UPDATES

NJ/EPA Therapeutic Recreation Association's 14th Annual Fall Conference: "PaRTnering in Progress"

Do you have knowledge to share? Consider earning CEUs while presenting at the 14th Annual NJ/EPA TRA Fall Conference, "PaRTnering in Progress" held on Monday and Tuesday, November 14 & 15, 2011! We are looking for presenters (both old and new) on a variety of topics. Presenters or co-presenters from complimentary and collaborative disciplines are welcome.



Not sure what to present on? Consider the following suggestions:

- ◆ How do we pool our knowledge and share our professional resources on a local and national level? (professional associations, within local TR programs, with Legislators)
- ◆ What are the tools of our trade which continue to push our progress into the future (APIE, Standards of Practice, documentation)?
- ◆ How do we collaborate with clients, peers, and supervisors, and other disciplines?
- ◆ How are we working with and within the community?

Think creatively...these suggestions are only the beginning. Put your own spin on our theme: "PaRTnering in Progress".

Contact Heather Burket at hkatengmail.com or Susanne Lesnik-Emas at slesnik@temple.edu with questions or to discuss a presentation idea.

if you are interested in presenting please submit the proposal information requested in the following call for papers (pg 4) to Dr. Susanne Lesnik-Emas at slesnik@temple.edu

Internship Directory

If you are interested in posting an internship at your facility to the NJ/EPA Internship Database please email Cynthia Franklin at cidfish529@yahoo.com

Committee Members:

Amber Hauer, Jennifer Honeyford, Sherry Hurwitz, Suzanne DeMauro, Jen Wheeler, Susanne Lesnik-Emas, Sherry Hurwitz, Erin Moore, Kaylee McGuire, and Cynthia Franklin.

EDUCATION COMMITTEE UPDATES***Call for Papers for the 14th Annual NJ/EPA TRA Fall Conference
“PaRTnering in Progress”***

Do you have knowledge to share? Consider earning CEUs while presenting at the 14th Annual NJ/EPA TRA Fall Conference, “PaRTnering in Progress” held Monday and Tuesday, November 14 & 15, 2011 at the New Jersey Hospital Association Conference Center in Princeton, NJ! We are looking for presenters (both old and new) on a variety of topics. Presenters or co-presenters from complimentary and collaborative disciplines are welcome.

Contact Heather Burket at hkaten@gmail.com or Susanne Lesnik-Emas at slesnik@temple.edu with questions or to discuss a presentation idea.

PROPOSAL MUST INCLUDE:

1. Title of session (please limit to 10 words)
2. Speaker’s name, address, daytime telephone number, fax and email
3. Brief description of the program (limited to 30 words)
4. Learning outcomes: outcomes must be measurable and indicate what the audience will learn by participating in the session (limit 3)
5. Outline of session
6. Mode of presentation: Lecture, discussion, panel, interactive activities
7. Resource list: books, articles, web sites
8. NCTRC Job Analysis code
 - a. Foundational Knowledge (FKW)
 - b. Practice of Therapeutic Recreation/Recreation (PTR)
 - c. Organization of Therapeutic Recreation/Recreation Therapy Service (ORG)
 - d. Advancement of the Profession (ADV)Additional information can be found at <http://nctrc.org/standardsandpublications.htm>
9. Relevant audience (please be specific): entry level therapist, advanced therapist, student, educator, entry level supervisor, advanced supervisor, etc.
10. Identify AV equipment needed. We can provide: slide projector, TV/VCR, overhead projector, power point projection (speaker must provide own computer), and white dry mark board or flipchart.

IN ADDITION: Please include: ☼ Professional resume/vitae
☼ 100 word introductory bio

SEND PROPOSALS (Microsoft Word format appreciated) **to** Dr. Susanne Lesnik-Emas, CTRS at slesnik@temple.edu **by Saturday, July 30, 2011.**

FUNDRAISING COMMITTEE UPDATES

Check out...

Our fundraiser on July 17th to see the Trenton Thunder take on the Reading Phillies. Check out the flyer and registration form on page 6!

Silent Auction

It's not too early to start thinking about our Fall Conference Annual Silent Auction. Do you frequent a small business regularly such as a retail store or restaurant and know the owner or manager? Perhaps you have connections to a cultural or sporting venue? If you know of an organization that might be willing to donate items for the Fall Silent auction or have new items at home that you can't use and are looking to get rid of, please contact Marlene Rivera, our fundraising chair at the email address below and share your resources for the profession.



Remember that any money fundraised in 2011 will go toward the provision of our Professional and Student Scholarships at our Annual Fall Conference!

Committee Members:

Marlene Rivera, Corinne Albrecht, and Linda Suarez

COMMUNICATION COMMITTEE UPDATES

Job listings

If you are interested in posting a job on NJ/EPA TRA's website please contact Kaylee McGuire at kem3058@yahoo.com. Listings will be posted for 3 months and are free for members; a \$10 donation is suggested for non-members.

TR Spotlight



Every newsletter contains a *TR Spotlight* featuring something special a member of our TR community brings to us. We are always looking for professionals to share their experiences with us! If you are interested please contact Kaylee McGuire at kem3058@yahoo.com for more information.

Committee Members:

Colleen Worth and Kaylee McGuire

TRENTON THUNDER™

NJ / EPA TRA FUNDRAISER NIGHT

Sunday July 17 @ 1:05 pm



Trenton Thunder
AA Affiliate of the
New York Yankees



vs



Reading Phillies
AA Affiliate of the
Philadelphia Phillies



**Youth Fielding Glove
Giveaway**

(1st 1000 fans ages 5-15)



**SPECIAL
RATE
\$10
PER TICKET**

A portion of proceeds will benefit the
**New Jersey Eastern Pennsylvania
Therapeutic Recreation Association**

**For More Information Please contact Marlene Rivera at
267-506-4744 or marlene.ctrs@gmail.com**

**NJ / EPA TRA Fundraiser Night
Sunday, July 17 @ 1:05 pm**

Name: _____

Address: _____

City: _____ State: _____ ZIP: _____

Phone: _____

Email: _____

Payment: Check (Payable to NJ/EPA TRA) or Cash

Total Tickets _____ x \$10.00 = \$ _____



Mail To:

Marlene Rivera
3900 City Ave, Apt D429
Philadelphia, PA 19131

LEGISLATION COMMITTEE

Please check out...

Please check out this month's SPOTLIGHT ON TR, highlighting NJ/EPA TRA Board President, Anne Richard's experience at the New Jersey Hospital Association's Spring President's meeting. THANK YOU ANNE FOR YOUR ATTENDANCE!!

NJ Member at Large Vacancy

Keep in mind that we are still looking for a member to serve on the board as NJ Member at Large. Please contact Heather Burket at hkatengmail.com for more information.

Committee Members:

Evan Barker and Sherry Hurwitz.

NETWORKING, OUTREACH AND ADVOCACY COMMITTEE UPDATES



It's game time!

The N.O.A. Committee, thanks to committee member Marlene Rivera, has set the date for a **fun and family friendly social networking opportunity** this summer. NJ/EPA TRA members, along with their family and friends, are invited to join us on **July 17th** at 1:05pm to watch the Trenton Thunder Minor League Baseball Team take on the Reading Phillies at Mercer County Waterfront Park in Trenton, NJ. This is an affordable event and tickets will be available soon. Please save the date! For more information, contact Marlene Rivera at marlene.ctr@gmail.com.

The N.O.A. Committee is also researching opportunities for social gatherings in Northern/Central NJ, Philadelphia Metro and the Lehigh Valley areas. If you have any ideas or would like to assist in organizing these networking events, please contact Kim Grandal at kimgrandal@aol.com.

The N.O.A. Committee consists of:

TR Week Baseball Social: Marlene Rivera, CTRS (Trenton, NJ- Central)

Annual Conference Social: Jen Wheeler, CTRS (Princeton, NJ- Central)

Northern NJ Social: **Suzanne DeMauro** (Northern NJ)

Philadelphia Metro Social: **Karin Tsantalis**, CTRS (Philadelphia Metro)

Lehigh Valley Social: Evan Barker, CTRS (Lehigh area)

Discount on NJ Nets Tickets: David Boyle, CTRS (Northern NJ) Contact David directly if you would like to purchase discounted NJ Nets Tickets at 201-390-9321.

Lastly the N.O.A. Committee will be starting a Facebook page as a means of sharing information regarding NJEPA TRA. Look for additional information and be sure to stop by and become a FAN of NJ/EPA TRA on Facebook.

NOMINATIONS COMMITTEE UPDATE



Our Nominations Committee is seeking a member to serve on the committee in order to assist in recruitment and potential election of future board and committee members. We are especially interested in assistance from a member living in Northern/Central New Jersey. Please contact Heather Burket at hkaten@gmail.com for more information.

Committee Members:

Rhonda Nelson and Angela Vauter

PAST BOARD OF DIRECTORS COMMITTEE UPDATE

Past Board of Director's Council is looking for old photos from prior NJ/EPA TRA conferences and social events.

Please send photos to
Sarah Humes at stelthorster@yahoo.com
Please identify estimated year, location, and people in
photos if possible.



Committee Members:

Amy Long, Sarah Humes, and Erin Moore

MEMBERSHIP UPDATE

The total member count for NJ/EPA TRA at the end of April was 102!

Just a friendly reminder that if you have not renewed your New Jersey/Eastern Pennsylvania Therapeutic Recreation Association Membership now is the time to do so!

You can print a membership application at: <http://www.njepa-tra.com/membership.htm>

There are many benefits to being an active member of NJ/EPA TRA including email news blasts, reduced registration fees for conferences/workshops, resource information, and many more!

If you have any questions about membership or have had any changes such as an address, e-mail, or phone number change please contact Patrick Cahill at Cahill0829@aol.com so you can continue to receive all of your membership benefits.

Membership Committee Members:

Patrick Cahill, Cynthia Franklin

NJ/EPA TRA would like to thank the following members for either joining NJ/EPA TRA or renewing their membership during March and April 2011 :

Angele Bolognini

Agnes Brand

Jessica Burke

Susan Kaggen-Bunkin

Joanne Carey

John Catarino

Susana Cebula

Ann Marie Chesterman

Stasia Chabon

Michele Collins

Catherine Coyle

Bethany Dodson

Susanne Lesnik-Emas

Lynn Foulke

Laura Hink

Linda Isele

Amanda Jones

Stephanie Knast

Kristyn Kressler

Bettyann Cramer-Manchin

Chloe Mekinc

Lilian Melendez

Erin Moore

Rachael Moore

Jennifer Palmer

Patricia De La Para

Dean Parker

Donna Rahm

Jennifer Furman

Annette M. Gailey

Tammy George

Rebekah Gilbert

Kimberly Grandal

Carleigh Haag

Amber Hauer

Marta Haviland

Ellen Rogers

Jo-Ellen Ross

John Shank

Michele Shara

Lacey Speert

Luann Weber

Clinton T. Williams

Erica Wright

Congratulations!

Melissa Morrow-McCulley has just completed her Master's Degree this May from Seton Hall!



Are you celebrating an exciting milestone in your life that you would like to share with your colleagues? (i.e. engagement, marriage, new baby, graduation, new job, etc) NJ/EPA TRA would be glad to acknowledge your personal and professional achievements by posting a congratulatory message within our next E-newsletter. Please e-mail Kaylee McGuire at kem3058@yahoo.com.

E D U C A T I O N A L O P P O R T U N I T I E S

**Pennsylvania Therapeutic Recreation Society 43rd Annual
Pennsylvania Therapeutic Recreation Institute**
@ Harrisburg/Hershey Holiday Inn, Grantville, PA
June 8-11, 2011

<http://www.ptsr.org/conference.htm>



**2010 National Association of Directors Of Nursing Administration/Long Term Care
National Conference**

@ Gaylord Palms in Kissimmee, Florida
July 16-20, 2011

<https://www.signup4.net/Public/ap.aspx?EID=20111684E&TID=MA%2bBMqV4b3HS9GNismx41Q%3d%3d>

ATRA Annual Conference

Indianapolis, IN
September 18-21, 2011

<http://atra-online.com/displaycommon.cfm?an=5>

***New Jersey/Eastern Pennsylvania Therapeutic Recreation Association
14th Annual Fall Conference
"PaRTnering in Progress"***

@ New Jersey Hospital Association Conference Center in Princeton, NJ
November 14-15, 2011

Please continue to check our website for information updates.

<http://www.njepa-tra.com/continuingeducation.htm>

Metro Recreation-Continuing Education for Recreation Therapists & Activity Leaders

Available at the following locations:

Somerset Gardens Assisted Living in Plainview, Long Island

Cedar Manor in Ossining, NY

Nassau Extended Care Center in Hempstead, NY

Sheepshead Nursing and Rehabilitation Center in Brooklyn, NY

Morris Hall in Lawrenceville, NJ

(Session details on flyer available online)

<http://www.metro-recreation.com/2010MetroWebsiteEd&TrRobinWexler2011flyer.pdf>

**Continuing Education opportunities through the
National Council of Certified Dementia Practitioners**

Variety of opportunities; details available through link below

<http://www.nccdp.org/nccdpnewsletter28.htm>

EDUCATIONAL OPPORTUNITIES CONTINUED

Program Planning for Therapeutic Recreation through ACES at the University of Florida

Online course for CEU's (Not available for college credit)

Robert M. Beland, PhD; rbeland@hhp.ufl.edu

<https://aces.dce.ufl.edu/Courses/Course.aspx?cld=101>

ATRA 2011 Teleconference Series

2011 calendar has been posted on the ATRA website

<http://atra-online.com/associations/10488/files/Webinars2011.pdf>

ATRA Annuals in Therapeutic Recreation

ATRA Annuals are collections of research articles and post-tests. These are available for CEU credit up to five years after publication. Members may view electronic versions as membership benefit.

<http://atra-online.com/displaycommon.cfm?an=5>

Check out the **New Jersey Hospital Association website** for a myriad of CEU offerings and Webinars available to you throughout the year as NJ/EPA TRA members.

<http://www.njha.com/education/conted.aspx>

Please visit our website at <http://www.njepa-tra.com/continuingeducation.htm>
for other local CEU opportunities.

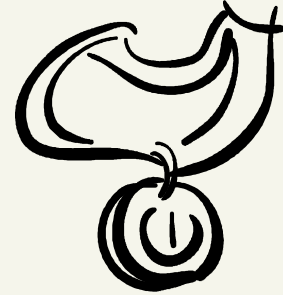


Would you like to advertise another Educational Opportunity that you know of on our website or within our E-newsletter? Please share your information with our Communication Committee Chairman, Kaylee McGuire at Kem3058@yahoo.com.

A W A R D S / S C H O L A R S H I P O P P O R T U N I T I E S***ATRA Awards Program***

It's time to recognize those outstanding individuals and organizations who have supported our profession! The ATRA Awards Program is comprised of eleven awards, plus the Peg Connolly and Linda Levine-Madori Scholarships, open to all ATRA members in good standing:

- I. Distinguished Fellow
- II. Outstanding Professional
- III. Member of the Year
- IV. Individual Citation
- V. Organization/Institution Citation
- VI. Certificate of Recognition
- VII. Frank N. Brasile Clinician of the Year
- VIII. Excellence in Education
- IX. Scholarly Achievement
- X. Chapter Affiliate of the Year
- XI. Advocacy



Please review [awards criteria](#) before submitting [your nomination](#). Awards will be presented at the Annual Conference in Indianapolis, IN. Submit nominations or questions about the nomination process to ATRA representative Julie Foster at ctrjulie@embarqmail.com by June 6th.

NJ/EPA TRA Professional and Student Scholarships

NJ/EPA-TRA offers two student scholarships and one professional scholarship to attend our Annual Fall Conference. Recipients of these conference grants will be entitled to free registration and partial hotel accommodation at the 14th Annual conference at the NJ Hospital Association Conference Center in Princeton, NJ. This registration includes more than an opportunity to observe quality educational sessions. It also includes unique networking opportunities with professionals in the field, conference/educational materials, parking, meals and snacks. These scholarships are “working scholarships”. Volunteer duties may include serving as a room host/CEU monitor, assisting with registration or performing other conference duties. Student grantees will be expected to serve on the NJ/EPA TRA Board for one year as student ad hoc member, choosing to either assist in a committee role or to highlight your conference experience by submitting a brief e-mail blast article sharing your experience and how you have benefited from attendance and involvement within NJ/EPA TRA. The TR practitioner recipient will be asked to do both of the above, becoming involved in an NJ/EPA TRA committee during 2011 as well as by submitting an article to go out to our members in one of our E-newsletters. Continue to check the NJ/EPA TRA website at <http://www.njepa-tra.com/continuingeducation.htm> for applications and information regarding application deadlines.



NEWS BLAST RE-CAP

**The 2011 National Association Directors
of Nursing Administration in Long-Term Care (NADONA/LTC)
National Conference in Kissimmee, Florida
July 17-20, 2011.**

Why attend the conference?

Long-term care is rapidly changing. New regulations and guidance are being implemented in facilities across the country and within specific states. How care is and will be delivered is changing with new state and federal legislative initiatives. How residents and families are obtaining information has evolved significantly with the increased use of the Internet and other electronic resources. The National Conference will provide you with any update on these and other important trends that are or will be affecting you, your facilities and your residents.

Access Sports' Second Annual Wiffle Ball Classic to be held Saturday, September 10th 2011
from 10am to 2pm at Campbell's Field
401 Delaware Avenue, Camden, NJ 08102.

ACCESS SPORTS provides sports tickets and sports clinics to social service agencies and schools serving underprivileged children, youth groups, and individuals with physical and/or mental health disabilities. The Wiffle Ball Classic is a way for Access Sports to raise funds and awareness for their organization. Now in its second year, it gives participants of 14 teams the chance to step on to the green grass of Campbell's Field for a chance at yellow-batted glory!

Access Sports is also looking for volunteers for the day of the event!

For registration forms or more information please contact Marlene Rivera at
marlene.ctr@gmail.com.

NEWS BLAST RE-CAP**Wheelchair Dancing**

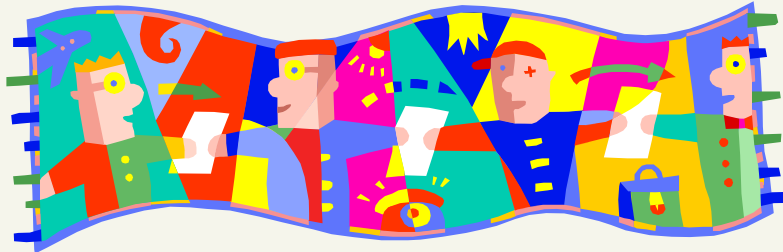
Wheelchair dancing has many benefits that can be facilitated by recreation professionals.

Please visit the American DanceWheels Foundation website to learn more information at <http://www.americandancewheels.com/>.

The American DanceWheels Foundation is holding a workshop at MOSS REHAB on July 15-17th.

ADF's Wheel One™ Wheelchair Dance Syllabus was developed to train individuals, with and without physical disabilities, dance teachers, physical and occupational therapists, and recreational professionals. The syllabus is designed to give participants using power and manual wheelchairs the ability to dance with non-disabled partners. They have adapted the traditional steps and rhythms used in the able-bodied dance syllabus to one standing and one seated partner, with the expressed purpose of creating a venue for social dancing.

For more information please visit:



If you are interested in sharing information regarding events or news relevant to Therapeutic Recreation with the NJ/EPA TRA membership please contact Kaylee McGuire at Kem3058@yahoo.com

SPOTLIGHT ON TR

Notes from NJ Hospital Association Allied President's Meeting

Anne Richard was able to represent NJ/EPA TRA at the recent NJ Hospital Association Allied President's Meeting, held on April 14, 2011. The focus of the meeting was primarily on the provision of a legislative update. Neil Eicher, the NJHA Deputy Director of Legislation & Policy was the speaker.

Please see a brief summary of his comments below:

Good News

- ◆ They are not hearing anything about shutting down the government
- ◆ The budget of \$29.4 billion will probably pass
- ◆ Charity care is up by \$10 million
- ◆ Graduate medical education increased by \$30 million
- ◆ No change to the mental health subsidy fund
- ◆ No change to the healthcare stabilization fund

Concerns

- ◆ Post Acute - \$9 million cut to special care hospitals (i.e. kids on ventilators)
- ◆ \$50 million cut to nursing homes
- ◆ Medicaid program – they are trying to shift some of the Medicaid patients to Medicare
- ◆ \$300 million global Medicaid waiver – lots of unknowns, but it allows states to restructure their Medicaid program to meet the state's needs. In other states that have done this, there have been some really good outcomes and also some really bad ones.

Overall, Mr. Eicher felt that it's a "win" situation in the state for healthcare, unless the state loses the Abbott case and they have to give back the education money that they've taken. If that happens, then everything will change. One note of interest to those in the RT/TR field, is that he stated the proposed healthcare model will focus on shifting the philosophy from "taking care of sick people to making everyone well". For more information, please check the Reform page on the NJHA.com website. □