



August/September 2010 E-mail Blast Newsletter

In this issue:

- President's Message
- Board Update
 - 2011 Board of Directors: **Nominations now being accepted**
- Education Update
 - November 8 & 9- Annual Fall Conference at NJHA in Princeton, NJ: **Registration now open**
- Membership Update
- Social Update:
 - October 21- Lehigh Valley Happy Hour
- CEU Educational Opportunities
- ATRA Proposed Model for Professional Representation
- Awards/Scholarship Opportunities: **Applications and Nominations now being accepted**
- YOU are needed...Get Involved!

President's Message:

Dearest NJ/EPA TRA Members and Friends,

Welcome to the beginning of the busiest time of year for many. We have finished up our summer vacations and have prepared the best we are able for school to begin, work to get busier, and for the buzz of extracurricular activities to resume, which will fill our families and our own calendars. At my place of work, we are even beginning discussion surrounding our holiday toy workshop and are handing in our holiday time off requests! That being said, this newsletter will be short and sweet. Filled with all the information you need to know and nothing more.

Please take a moment to read the August/September E-mail Blast Newsletter in its entirety to find out about opportunities to increase your involvement by taking advantage of educational opportunities to attain CEUs, learning about available awards and scholarships, and finding out ways that the Board and Committees can currently use your help.

And please plan on joining us in Princeton, NJ this November 8th and 9th for our 13th Annual NJ/EPA TRA 2-day Fall Conference at the New Jersey Hospital Association Conference Center where we will enjoy sessions surrounding "REConnecting with our Resources and Collaborating with our Teams". I am also excited to announce the commencement of the 1st Annual RECOgnition Awards Program, where we will continue the work of last year's Board of Directors in RECOgnizing each other for our commitment to our profession, our clients, and our outstanding efforts of involvement.

Respectfully yours,

Heather J. Burket, Ed.M., CTRS, CCLS

Board Update:

❖ **Nominations for the 2011 Board of Directors:** The 2010 Board of Directors and Nominations Committee is now accepting nominations for our 2011 Board of Directors Ballot. Open positions include the NJ Member at Large, Treasurer, and President-Elect. Please e-mail Heather Burket at hkatn@gmail.com if you would like to see a copy of the full role description for any of the above positions. If you are interested in nominating yourself or would like to nominate someone you know for a position on the 2011 Board of Directors, please e-mail Erin Moore at moore.erin.k@gmail.com. All candidates will be considered and will be asked their intent to serve prior to being placed on the ballot.

President-Elect	Treasurer	NJ Member at Large
Term: 3 years President-Elect: 11/2010-11/2011 President: 11/2011-11/2012 Past President: 11/2012-11/2013	Term: 2 years 11/2010-11/2012	Term: 2 years 11/2010-11/2012 *Individual must reside in NJ.
Duties/Responsibilities: <ul style="list-style-type: none"> Assists the President and provides leadership in his/her absence. Serves as liaison to committee chairs of the affiliate. Represents chapter at ATRA conferences and through involvement in Chapter Affiliate Council calls and meetings. Attends all scheduled board meetings and membership meetings. Contributes to discussions and deliberations on all affiliate business issues. Coordinates e-mail blasts. Assumes the role of President in 11/11. 	Duties/Responsibilities: <ul style="list-style-type: none"> Maintains all official financial records of the affiliate. Submits quarterly financial reports Attends all scheduled board meetings and membership meetings. Contributes to discussions and deliberations on all affiliate business issues. Submits articles/information to the e-mail blasts and newsletters as assigned. 	Duties/Responsibilities: <ul style="list-style-type: none"> Serves as liaison for members who live in NJ. Monitors relevant legislative issues and participates in State Public Policy initiatives. Represents chapter through involvement in ATRA Membership calls. Attends all scheduled board meetings and membership meetings. Contributes to discussions and deliberations on all affiliate business issues. Submits articles/information to the e-mail blasts and newsletters as assigned.

Education Update:

The New Jersey/Eastern Pennsylvania Therapeutic Recreation Association's 13th Annual 2-Day Conference on November 8, 2010 and November 9, 2010

“REConnecting with our Resources, Collaborating with our Teams”

Held at the Conference Center at the NJ Hospital Association • 760 Alexander Road • Princeton, NJ

Conference Fees:

	Early Bird (Postmarked by 10/22/10) Full Conf. /Daily	Regular (Postmarked by 10/29/10) Full conf. /Daily	On-Site (Postmarked after 10/30/10) Full conf. / Daily
2010 Member	\$140 / \$90	\$160 / \$100	\$205 / \$110
Non-Member	\$170 / \$105	\$200 / \$115	\$255 / \$125
2010 Student Member	\$65 / \$40	\$70 / \$45	\$75 / \$50

Student Non-Member*

\$85 / 50

\$90 / \$55

\$95 / \$60

Continuing Education Units \$10.00 (.13 CEUs total for full conference)

* Student non-members must provide copy of their Student ID card with registration application in order to receive student non-member rates.

Please visit www.NJEPA-TRA.com/continuingeducation.htm for additional Conference Registration information, application, full program, and information about student and professional scholarships, and volunteer opportunities. Volunteers receive a \$10 cost off their daily registration rate.

Membership Update:

Visit <http://www.njepa-tra.com/membership.htm> to print out our membership application. Membership is for the calendar year, January through December, and 2010 dues remain reasonable at \$25 annually for professional members and \$15 for our student members. Thank you for your continued support of your ATRA Chapter Affiliate!

Have you had a recent address, e-mail, phone number, or name change? Please e-mail Patrick Cahill, CTRS at cahill829@aol.com with your former and current information so that you may continue to receive all of your member benefits.

Are you celebrating an exciting milestone in your life that you would like to share with your colleagues? Perhaps you have news of an engagement, marriage, new baby, graduation, new job, first home, etc...? NJ/EPA TRA would be glad to acknowledge your personal and professional achievements and celebrate with you by posting a congratulatory message within our next e-mail blast newsletter. Please e-mail Heather Burket at hkaten@gmail.com with the milestone achievements that you would like us to share with fellow members. Likewise, if you know of a member who has fallen ill or is going through hardship, please notify us and we will send our condolences and well wishes on behalf of the organization via a personalized and private handwritten note.

Congratulations to Sarah Humes (Telthorster) on her marriage this past August 21st!

NJ/EPA TRA would like to thank the following members for either joining NJ/EPA TRA or renewing their membership in July/August for the 2010 Calendar Year (Applications processed after September 9th will be recognized in the October/November E-mail Blast Newsletter).

*Kelly Conlin, CTRS, CCLS
Gretchen Kishbauch*

We are currently **133** members strong and growing! Do your part and encourage your peers to join/renew!

Social Opportunity:

Attention all NJ/EPA TRA members within the Lehigh Valley! Come out and meet fellow members and Therapeutic Recreation Specialists that live in the **Lehigh Valley** for a **happy hour at Allentown Brew Works** (812 West Hamilton Street, Allentown, PA 18101 www.thebrewworks.com) on **October 21, 2010**, from **6-9 pm**.

The front portion of the restaurant will be reserved for NJ/EPA and you can enjoy drink and appetizer specials until 7 pm. **Non-members are welcome** and are encouraged to attend. If you have any questions about the event, please contact our PA Member-at-Large, Evan Barker at ebarker@gsrh.org.

CEU Educational Opportunities:

‘Stress Management for the Recreation Therapist’ (0.2 CEU per session)

Speaker: Robin Wexler, CTRS

October 4, 2010 11:30am-2:00 pm

Registration required by September 30

Morris Hall- 1 Bishops’ Drive, Lawrenceville, NJ 08648

<http://metro-recreation.com/2010three.doc>

‘Cooking Activities for Groups and Individuals in Therapeutic Recreation Activities’ (0.2 CEU per session)

Speaker: Robin Wexler, CTRS

October 14, 2010 11:30am-2:00 pm

Registration required by September 30

Cedar Manor- Cedar Lane, Ossining NJ 19562

<http://nystra.org/documents/2010brochureupdated.doc>

ATRA Series E Webinar: ‘Session E3: This is Your Brain on Autism’

Speaker: Phillip Pengelly

Wednesday, October 20, 2010 1:00-2:00 pm

<https://secure.confertel.net/tsregister.asp?program=ATRA-D2010>

New England Therapeutic Recreation Association 2010 Fall Conference

@ The Southeastern Regional @ Education Service Center (SERESC) in Bedford, New Hampshire

November 4-5, 2010

<http://www.newenglandtra.org/conference.htm>

***New Jersey/Eastern Pennsylvania Therapeutic Recreation Association 13th Annual Fall Conference:
“REConnecting with our Resources, Collaborating with our Teams”***

@ the New Jersey Hospital Association Conference Center in Princeton, NJ

November 8-9, 2010

<http://www.njepa-tra.com/continuingeducation.htm>

‘Managing Challenging Behaviors in Dementia Care’. (0.2 CEU per session)

Speaker: Robin Wexler, CTRS

December 16, 2010 11:30am-2:00 pm

Registration required by December 5

Cedar Manor- Cedar Lane, Ossining NJ 19562

<http://nystra.org/documents/2010brochureupdated.doc>

Program Planning for Therapeutic Recreation presented by the ACES at the University of Florida

The Program Planning for Therapeutic Recreation online course is convenient for Therapeutic Recreation professionals because you can complete the course at anytime and from anywhere. The course covers the study of planning, implementing and evaluating therapeutic recreation programs. Topics include philosophy of therapeutic recreation, client-centered programming, ethics, accessibility, documentation, health, human services, and trends. Once you register you will have exactly 24 weeks (168 days) to complete the course before your access expires. \$150 cost includes 15 modules (1.5 CEU). Receive a certificate of completion immediately upon completion of the modules. For easy registration and more information, contact the instructor at rbeland@hnp.ufl.edu or visit <http://aces.dce.ufl.edu/Courses/Course.aspx?cId=101>. *This course is not for college credit.*

ATRA Annuals in Therapeutic Recreation

ATRA Annuals are collections of research articles and post-tests. These are available for CEU credit up to five years after publication. Members may view electronic versions as membership benefit.

<http://atra-online.com/index.cfm>

NCTRC presents SPECIALTY CERTIFICATION...the next level of Professional Recognition.

Areas of recognition include Physical Medicine/Rehabilitation, Geriatrics, Developmental Disabilities, Behavioral Health, and Community Inclusion Services. Please visit the link below for eligibility requirements.

<http://nctrc.org/SpecCert.htm>

Join ATRAnet

ATRAnet is a forum established by Oklahoma State University's Therapeutic Recreation Program to promote discussion regarding issues facing the profession of Therapeutic Recreation. ATRAnet is endorsed by the American Therapeutic Recreation Association (ATRA). ATRA is committed to assisting Oklahoma State University faculty in monitoring content using ATRA members' expertise. While ATRA endorses this website, it nor Oklahoma State University are responsible for the content and information shared on ATRAnet. ATRA encourages all ATRAnet members to verify facts/materials from other credible sources before making decisions. Official ATRA positions will be posted on ATRA's website.

To Subscribe to ATRAnet: Send email to: LISTSERV@LISTSERV.OKSTATE.EDU. In first line of message: type "SUBSCRIBE ATRANET-L"

The Rules for this listserv are:

1. Only subscribers may post on ATRAnet. This will cut back on spam, viruses, etc.
2. Attachments must be smaller than 250K. It is suggested that you type the majority of text in email and send attachment to individual users.
3. We do not allow advertising with the exception of information that could be useful to other subscribers for practice, educational or research purposes.
4. All subscribers must be respectful of other members in the course of dialogue.

ATRA and Oklahoma State have the right to remove individuals from ATRAnet if a person violates the rules.

Helpful hints to remember when joining a listserv:

If you are switching email addresses unsubscribe from the first email address and re-subscribe from the new address.

Make sure your virus protection system (Norton, McAfee etc) is updated frequently to protect your computer from viruses.

Please visit our website at <http://www.njepa-tra.com/continuingeducation.htm> for other local CEU opportunities.

Would you like to advertise another Educational Opportunity that you know of on our website or within our e-mail blasts? Please share your information with our Communication Committee Chairman, Lucy Orr Tomczynski, CTRS, CCLS at lucyctrs@msn.com.

Award/ Scholarship Opportunities:

- ❖ ***NJ/EPA TRA Professional and Student Scholarships*** - **APPLICATIONS BEING ACCEPTED THROUGH OCTOBER 15th**. NJ/EPATRA offers two student scholarships and one professional scholarship to attend our Annual Fall Conference. Recipients of these conference grants will be entitled to free registration and partial hotel accommodation at the 13th Annual conference scheduled for November 8th and 9th at the NJ Hospital Association Conference Center in Princeton, NJ. This registration includes more than an opportunity to observe quality

educational sessions. It also includes unique networking opportunities with professionals in the field, conference/educational materials, parking, meals and snacks. These scholarships are “working scholarships”. Volunteer duties may include serving as a room host/CEU monitor, assisting with registration or performing other conference duties. Student grantees will be expected to serve on the NJ/EPA TRA Board for one year as student ad hoc member, choosing to either assist in a committee role or to highlight your conference experience by submitting a brief e-mail blast article sharing your experience and how you have benefited from attendance and involvement within NJ/EPA TRA. The TR practitioner recipient will be asked to do both of the above, becoming involved in an NJ/EPA TRA committee during 2010 as well as by submitting an article to go out to our members in one of our e-mail blasts. Visit the NJ/EPA TRA website at <http://www.njepa-tra.com/continuingeducation.htm> for applications.

- ❖ **1st Annual NJ/EPA TRA RECOgnition Awards Program- NOMINATIONS BEING ACCEPTED THROUGH OCTOBER 15th.** Please take a moment to RECOgnize a few of your fellow Therapeutic Recreation Specialists. Please send an e-mail including nominee’s name, award nominated for, place of work, title, and a detailed description of why you feel nominee is deserving of an award. May include statements from co-workers, clients, etc. Please include your own contact information. Nominee must be a member of NJ/EPATRA to be considered. Submit nominations to Amy Long at Amy.long@kidspeace.org.

Nominate a worthy candidate for one of the following categories:

Excellence in Therapeutic Recreation
3 Professionals will be recognized for the year 2009-2010. Nominate candidates who have demonstrated outstanding service in the field.

Innovation Award
Awarded to a TR professional who has implemented an innovative program related to the field of TR.

Excellence in Therapeutic Recreation by a Young Professional
2 Young Professionals will be recognized for the year 2009-2010. Nominate candidates with 2 years or less of experience who have exhibited outstanding service to the field of TR.

Service Award
Awarded to a TR professional who has provided excellent service outside the working environment (i.e. non-profit organizations, affiliate work, professional organization involvement, legislation, etc.)

YOU are needed...Get Involved:

- ❖ **Request for Conference Volunteers:** We are looking for some willing members who would be interested in getting involved in a small but significant way as we near our Fall conference this September and October, by offering their assistance as needed. Tasks might include creating a flyer, stuffing packets, making name badges, etc... If you have some free time and are interested in learning more information about available ways to getting involved in our Fall Conference planning, please send Erin Moore at e-mail at moore.erin.k@gmail.com.
- ❖ **Request for Silent Raffle Items:** It’s that time of year again! Time to start scouting for donations toward our highly anticipated Fall Silent Raffle. In years past, we have received items such as TR and collegiate spirit-wear, themed gift baskets, restaurant gift certificates, gift cards, theatre and sporting event tickets, and home décor. Do you have any friends or family that own or manage a restaurant or retail store? Do you have any new gift-type items lying around the house that you will never use? We also need baskets, basket fillers, clear basket wraps, ribbons, scotch

tape, and brown lunch bags to put raffle tickets in. Please contact Marlene Rivera at marlene.ctr@gmail.com if you have any questions related to accepted donations, to request a fundraising form letter to solicit donations from organizations you are affiliated with, or to arrange a pick-up date/time for items.

- ❖ **Request for Webmaster:** Are you savvy on the computer, know how to manage a webpage, and are interested in getting more involved with NJ/EPA TRA? Our Webmaster is looking to step down from her position after many years of committed service and we are looking for someone with interest or developed skills to take over as our Webmaster. If you have interest in learning more about this paid position and role requirements, please contact Heather Burket @ hkatn@gmail.com.
- ❖ **NCCAP issues a “CALL to ACTION” to Activity Professionals...**

Call to Action Meeting, November 13, 2010

Location – Holiday Inn RDU

930 Airport Blvd

Morrisville, NC 27560

919.465.1910 or 540.656.3796STAY YOU

(rooms are 69.00+ tax, free shuttle from RDU airport, lunch meal provided by NCCAP)

This "Call to Action" meeting is sponsored by NCCAP (National Certification Council for Activity Professionals) in collaboration with COAP-National (Coalition of Activity Professionals).

We are concerned about the future of the activities profession and the activities professional of all levels. We are inviting you to attend and help shape a brighter future for those who serve the elderly population. We represent activity professionals who provide quality activity services to hundreds of thousands of people living and receiving long-term care. Activity professionals have a special skill set that is appreciated by those that they serve. It is now time to recognize a profession that has supported the quality of life in facilities across the nation and the world.

Topics for Collaboration

- Where we are as an industry
- Where we are as a profession
- The initial intent of the “Universal Worker”
- The need to assure continued recognition as a profession in light of the MDS 3.0
- Assess where we are for state and national regulatory compliance
- The future of the Activities Profession and the Recreation/Activities Professional
- What NCCAP needs to do toward the future
- Collaboration of other associations as well as NCCAP of where we should be as an industry
- Strategic planning of NCCAP, National Associations, State Associations and others for the future of the Activities Profession

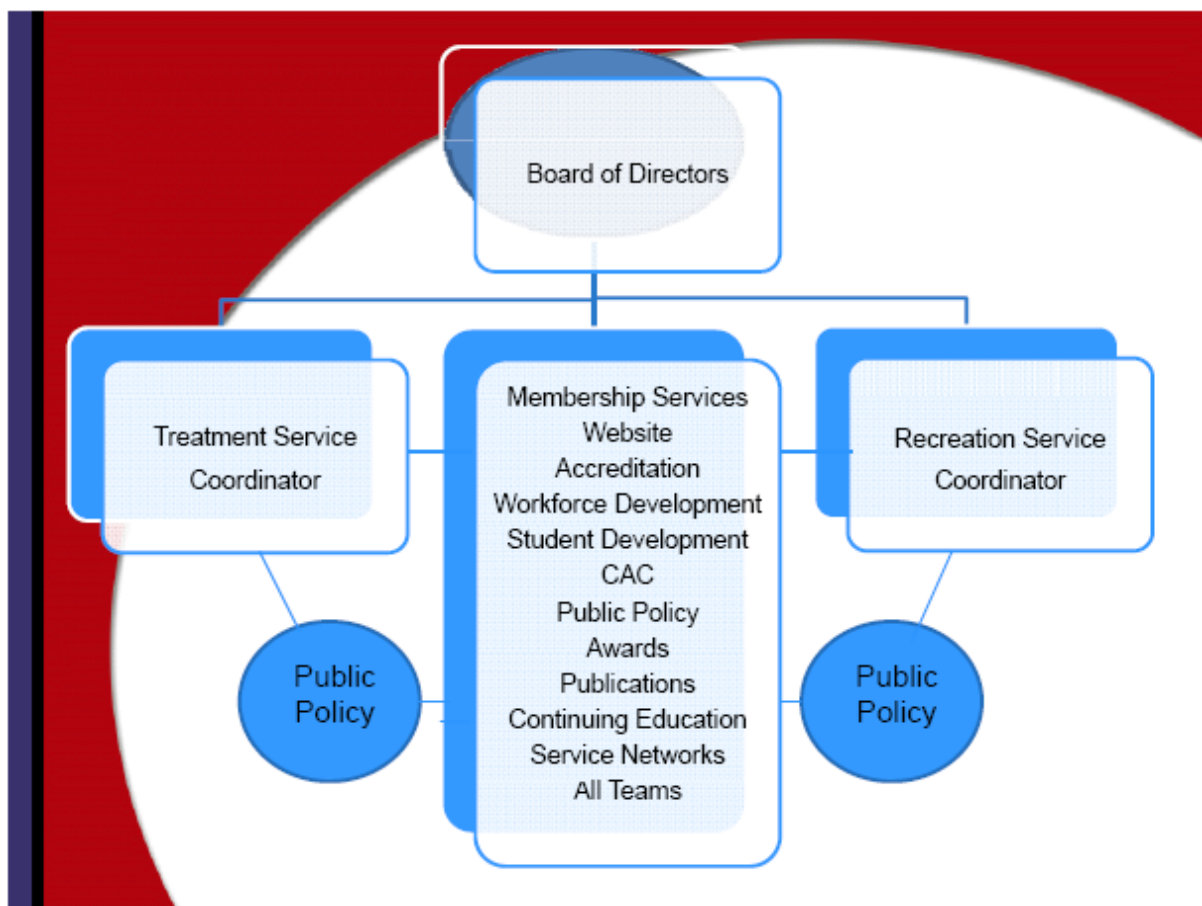
4 CE's are available at no charge (CEU's through the university are available and the fee for that format is \$30.00).

FREE and Open to ANY/ALL activity/recreation professionals concerned about the future of the profession -

PLEASE see the official NCCAP facebook page for a copy of the registration form, so we can track the number of people planning to attend/meal count. SPACE is limited so be sure to register ASAP. Bridgeline or viewing via YouTube may be available, please contact Kim Grandal at Kimgrandal@aol.com with questions.

ATRA Proposed Model for Professional Representation

This is a summary from the ATRA Membership Call on 8/26/10. ATRA acknowledges that therapeutic recreation is used in many settings and offers a continuum of services. They agree that conceptually there may be two extreme poles in the profession (recreation services and treatment services), but realize that the majority of the professionals in the field practice somewhere in the middle. To meet professional and policy needs across the continuum of care, the ATRA BOD will appoint an experienced coordinator over each end of the TR continuum that will coordinate the organization's resources and efforts to successfully meet those needs. Proposed model is diagrammed below.



Treatment Services: To define and promote those services that remediate, restore, and rehabilitate in order to reduce or eliminate the effects of illness or disability.

Recreation Services: To develop and promote opportunities for our clients to maintain and/or develop lifelong leisure independence and wellness.

They would like feedback from the membership, so please send comments to the ATRA board at national@atra-online.com.